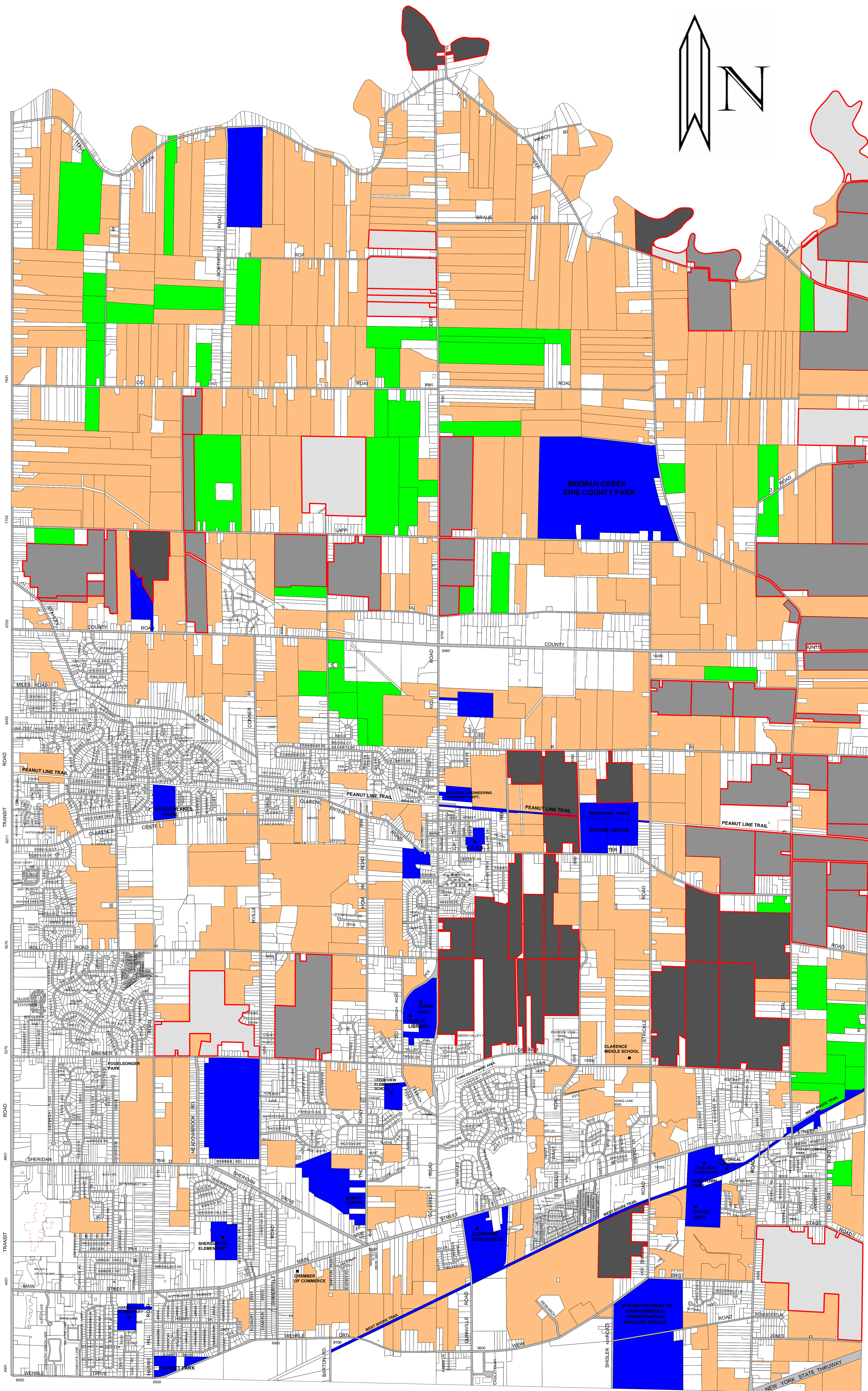




# TOWN OF CLARENCE

ERIE COUNTY NEW YORK

OPEN SPACE PRIORITIES MAP  
JANUARY 2010



## LEGEND

-  Priority Areas
-  Acquisition of Land Title
-  Purchase Development Rights
-  Wetland Protection
-  Active Agricultural
-  Community Facility
-  Inventoried Parcel

0 5000  
SCALE  
(in feet)

