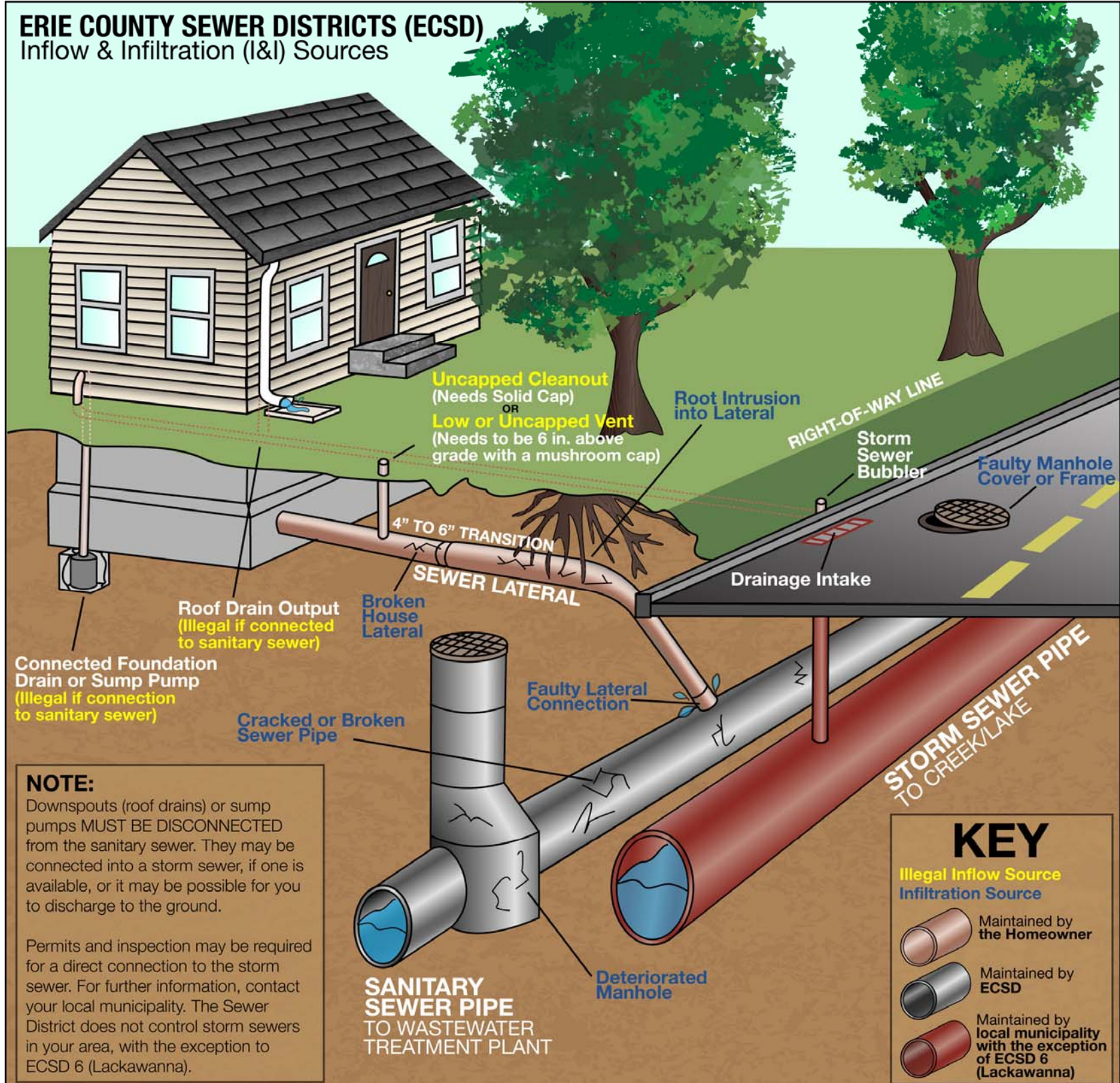


ERIE COUNTY SEWER DISTRICTS (ECSD) Inflow & Infiltration (I&I) Sources




NOTE:

Downspouts (roof drains) or sump pumps **MUST BE DISCONNECTED** from the sanitary sewer. They may be connected into a storm sewer, if one is available, or it may be possible for you to discharge to the ground.

Permits and inspection may be required for a direct connection to the storm sewer. For further information, contact your local municipality. The Sewer District does not control storm sewers in your area, with the exception to ECSD 6 (Lackawanna).

KEY

Illegal Inflow Source
Infiltration Source

-  Maintained by the Homeowner
-  Maintained by ECSD
-  Maintained by local municipality with the exception of ECSD 6 (Lackawanna)