



County of Erie

GALE R. BURSTEIN, MD, MPH, FAAP
COMMISSIONER OF HEALTH

WEEKLY INFLUENZA SURVEILLANCE REPORT FOR WEEK ENDING FEBRUARY 24, 2018

New York State Department of Health (NYSDOH) Influenza Surveillance

Summary:

- Influenza activity level was categorized as geographically **widespread**². This is the 12th consecutive week that widespread activity has been reported.
- There were **13,703** laboratory-confirmed influenza reports, a **25% decrease** over last week.
- Of the **3,331** specimens submitted to WHO/NREVSS laboratories, **957 (28.90%)** were positive for influenza.
- Of the **161** specimens tested at Wadsworth Center, **123** were positive for influenza. **12** were **Influenza A (H1)**, **88** were **influenza A (H3)**, and **23** were **influenza B (Yamagata)**.
- Reports of percent of patient visits for influenza-like illness (ILI³) from ILINet providers was **7.38%**, which is above the regional baseline of 3.10%.
- The number of patients hospitalized with laboratory-confirmed influenza was **1,702** a **21% decrease** over last week.
- There were **no** influenza-associated pediatric deaths reported this week. There have been **five** influenza-associated pediatric deaths reported this season.

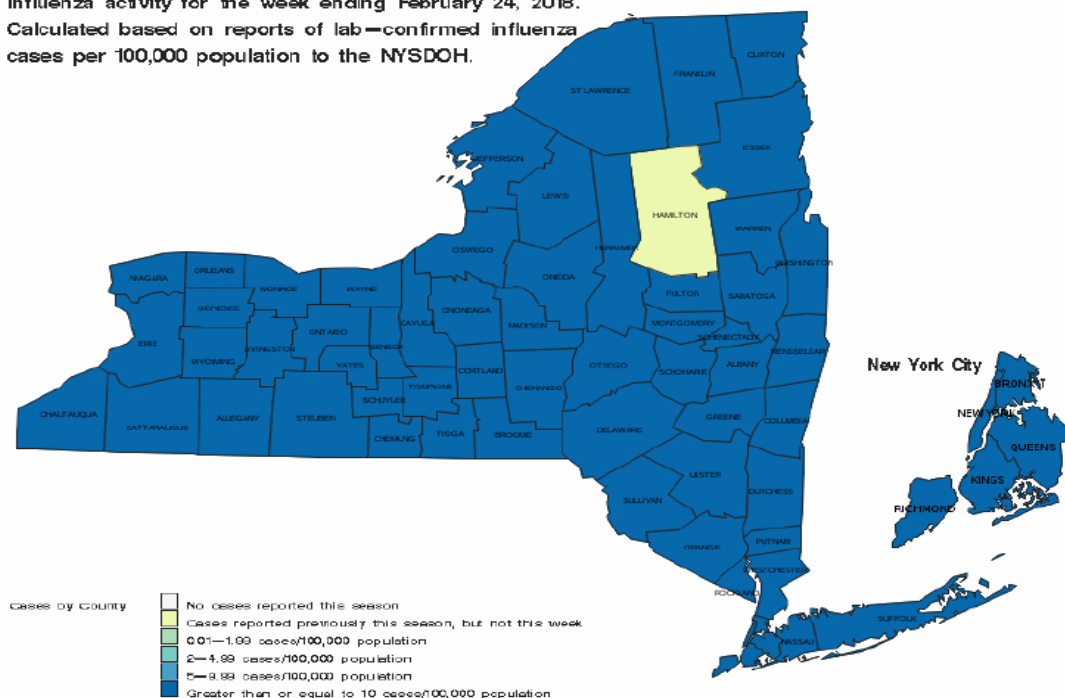
Source: https://www.health.ny.gov/diseases/communicable/influenza/surveillance/2017-2018/flu_report_current_week.pdf

A. NYS County Summary:

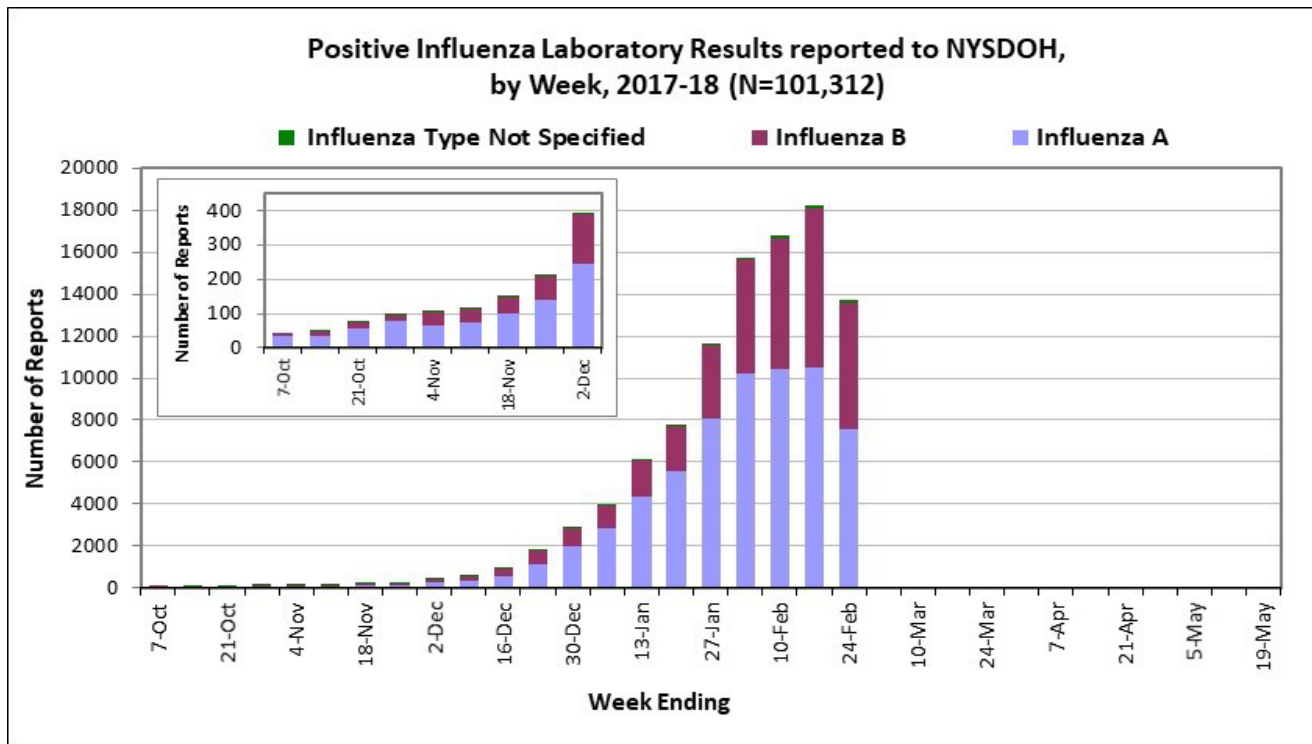
All clinical laboratories that perform testing on residents of NYS report all positive influenza test results to NYSDOH.

- All 61 counties reported cases this week.
- Incidence ranged from 0-197.28 cases/100,000 population.

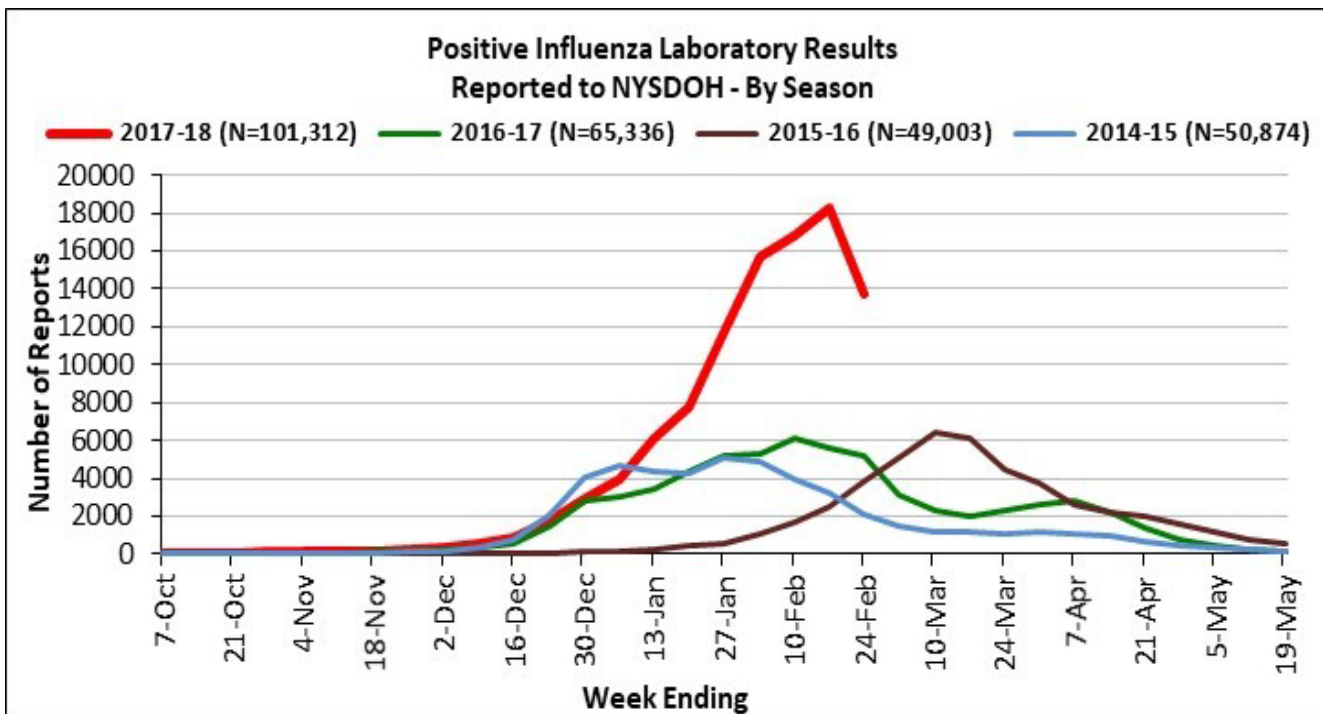
Influenza activity for the week ending February 24, 2018.
Calculated based on reports of lab-confirmed influenza cases per 100,000 population to the NYSDOH.



B. NYS - Positive Influenza Laboratory Results by Week



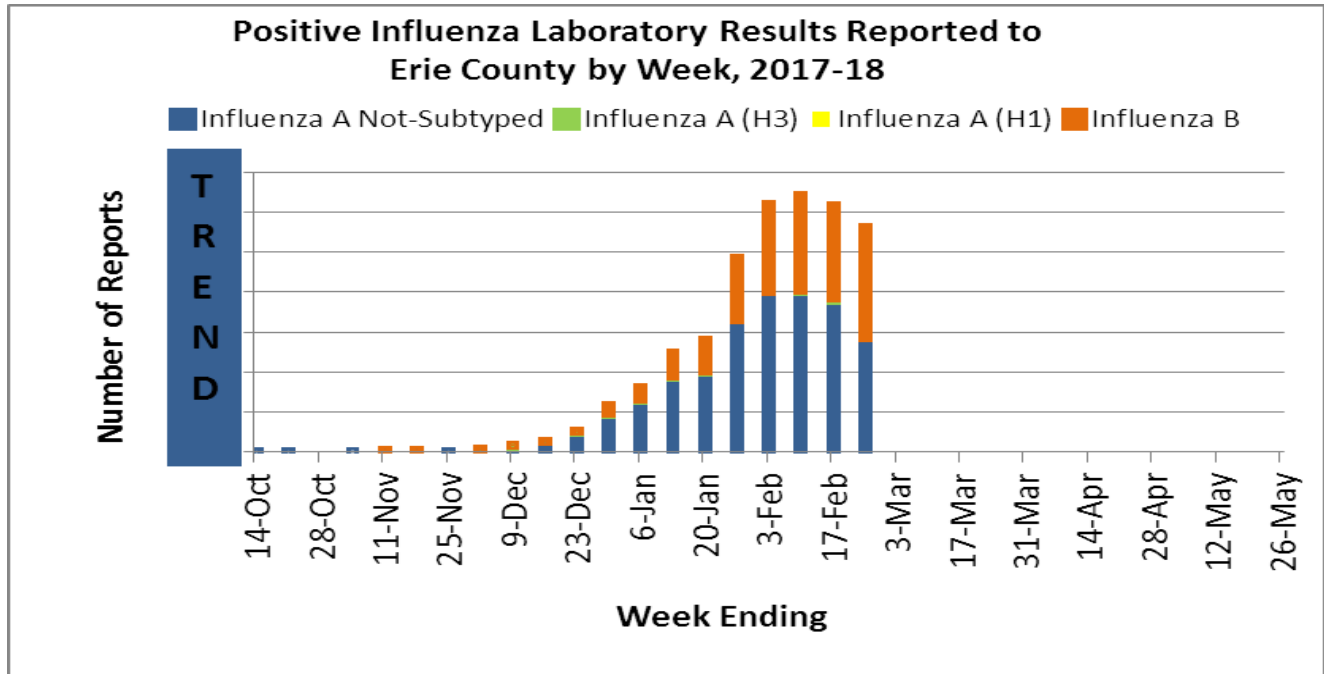
C. NYS - Positive Influenza Laboratory Results by Season



Erie County Department of Health (ECDOH) Influenza Surveillance

The ECDOH collects, compiles, analyzes information on influenza activity and generates this weekly report during the influenza season (October through the following May). Hospital, commercial, and public health laboratories report positive influenza tests via NYSDOH Electronic Clinical Laboratory Reporting System (ECLRS)

A. Erie County – Positive Influenza Laboratory Results by Week



B. Erie County - Positive Influenza Laboratory Results by Season

