



COVID-19 Data Update

Week ending August 13, 2022

All data are provisional.

1,301 new COVID-19 cases were recorded for the week ending August 20, 2022. This is a 7% increase from the previous week's total (1,213 cases). This follows three weeks of slight decreases in weekly case totals. These data do not include at-home tests. The weekly COVID-19 positivity rate was 12.9%, an increase from the previous week's COVID-19 positivity rate of 11.3%. Overall reported COVID-19 diagnostic tests were stable, with 10,074 tests compared to 10,702 tests during the previous week.

7-day case rate per 100,000 persons was 136.3, up from 127.1 the previous week. Erie County remains at a low COVID-19 Community Level per CDC indicators. However, Erie County remains in "high" transmission per CDC community transmission metrics.

Buffalo city COVID-19 cases comprised 30.2% of new COVID-19 cases this past week. (Buffalo city population is 29.2% of all Erie County residents).

Erie County COVID-19 Wastewater Surveillance Data: See Figure 3. COVID-19 wastewater surveillance data through August 16, 2022 showed SARS-CoV-2 viral particles in the top 80-100% of samples collected since 12/1/21 within all sewershed areas sampled except Big Sister Creek. All seven sewershed areas showed between a 99%-10% decrease over 15 days leading up to August 16. These data show that COVID-19 continues to circulate within Erie County at a high level, with a decline in detected particles over the past two weeks.

See <https://www.erie.gov/covid19-wastewater/>

Erie County COVID-19 Hospitalization Data: See Figures 4a and 4b. NYSDOH publishes updated hospitalization data by region at <https://coronavirus.health.ny.gov/daily-hospitalization-summary>.

Erie County COVID-19 Vaccination Data: See Section 2. NYSDOH updates vaccine data daily. Demographic data: <https://coronavirus.health.ny.gov/demographic-vaccination-data>.

Erie County COVID-19 Mortality Data: Mortality data are updated through July 26, 2022 based on data available to ECDOH. More recent data will be reported when available. NYSDOH reports COVID-19 mortality data at <https://coronavirus.health.ny.gov/fatalities-0>. See Section 3.

CONTENTS

Section 1: COVID-19 Case Data

Figure 1: Confirmed COVID-19 Cases by Age Group & Gender (to date)	Page 1
Figure 2: Confirmed COVID-19 Cases by Age Group and Gender (latest week)	Page 1
Table 1: New COVID-19 Cases in the Past Seven Days	Page 1
Figure 3: Erie County COVID-19 Wastewater Surveillance	Page 2
Table 2: Confirmed COVID-19 Cases by ZIP Code	Page 3
Figures 4a and 4b: Erie County COVID-19 Hospitalizations	Page 5

Section 2: COVID-19 Vaccination Data

Table 3: Erie County COVID-19 Vaccination Rates by Age and ZIP Code	Page 6
---	--------

Section 3: COVID-19 Mortality Data

Tables 4 & 5: Erie County COVID-19 Deaths By Age Group	Page 8
Table 6: Erie County COVID-19 Deaths by Residence	Page 8

Section 1: Confirmed COVID-19 Cases

Figure 1

Confirmed COVID-19 Cases by Age Group and Gender (March 2020-present)

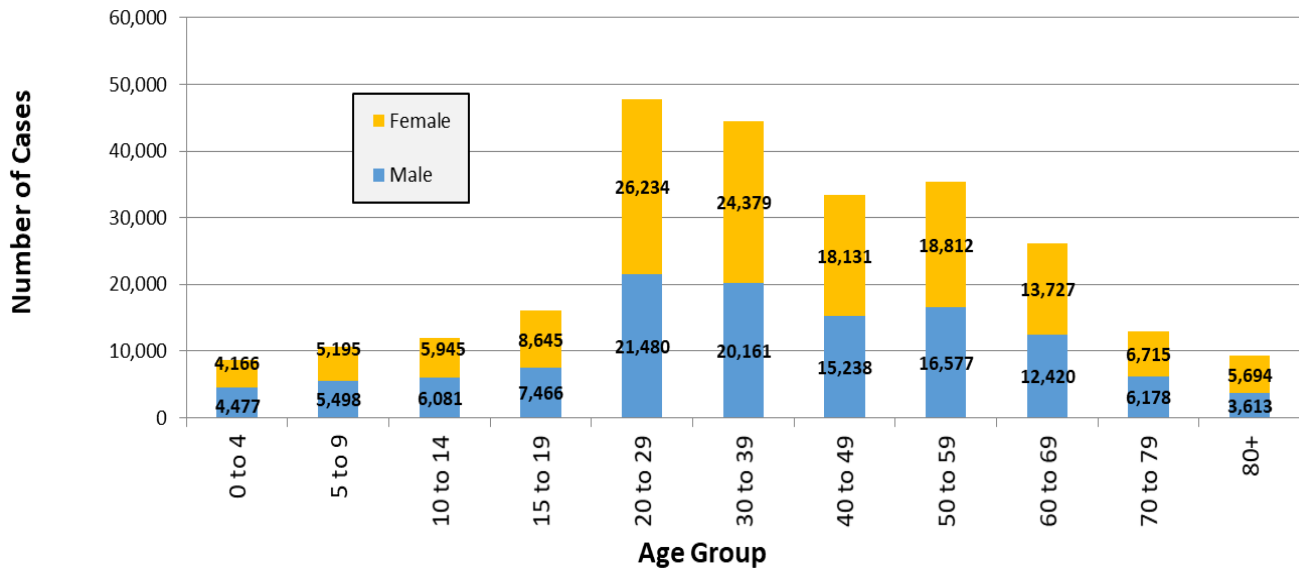


Figure 2

Confirmed COVID-19 Cases by Age Group (August 14-20, 2022)

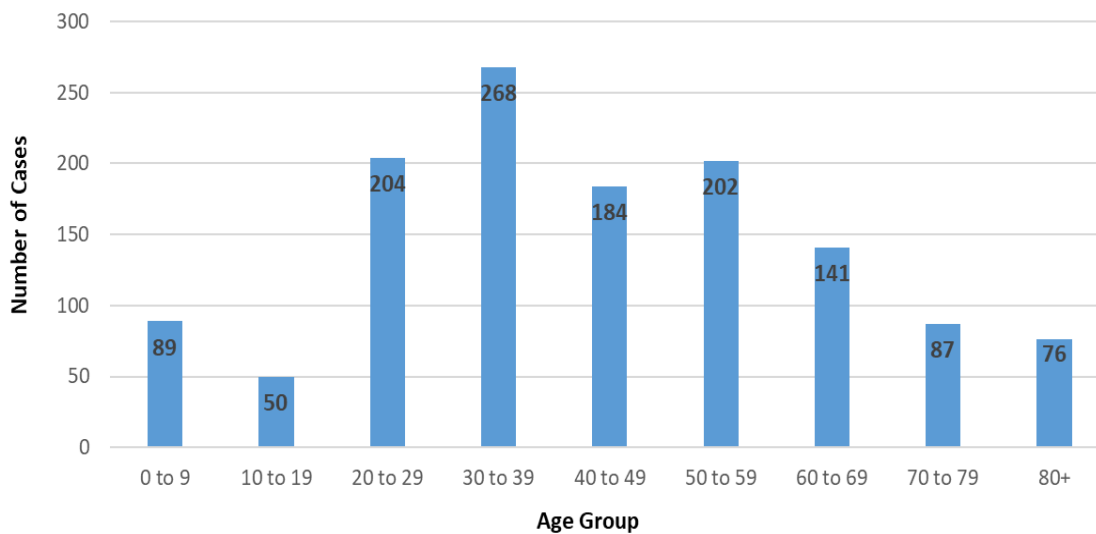


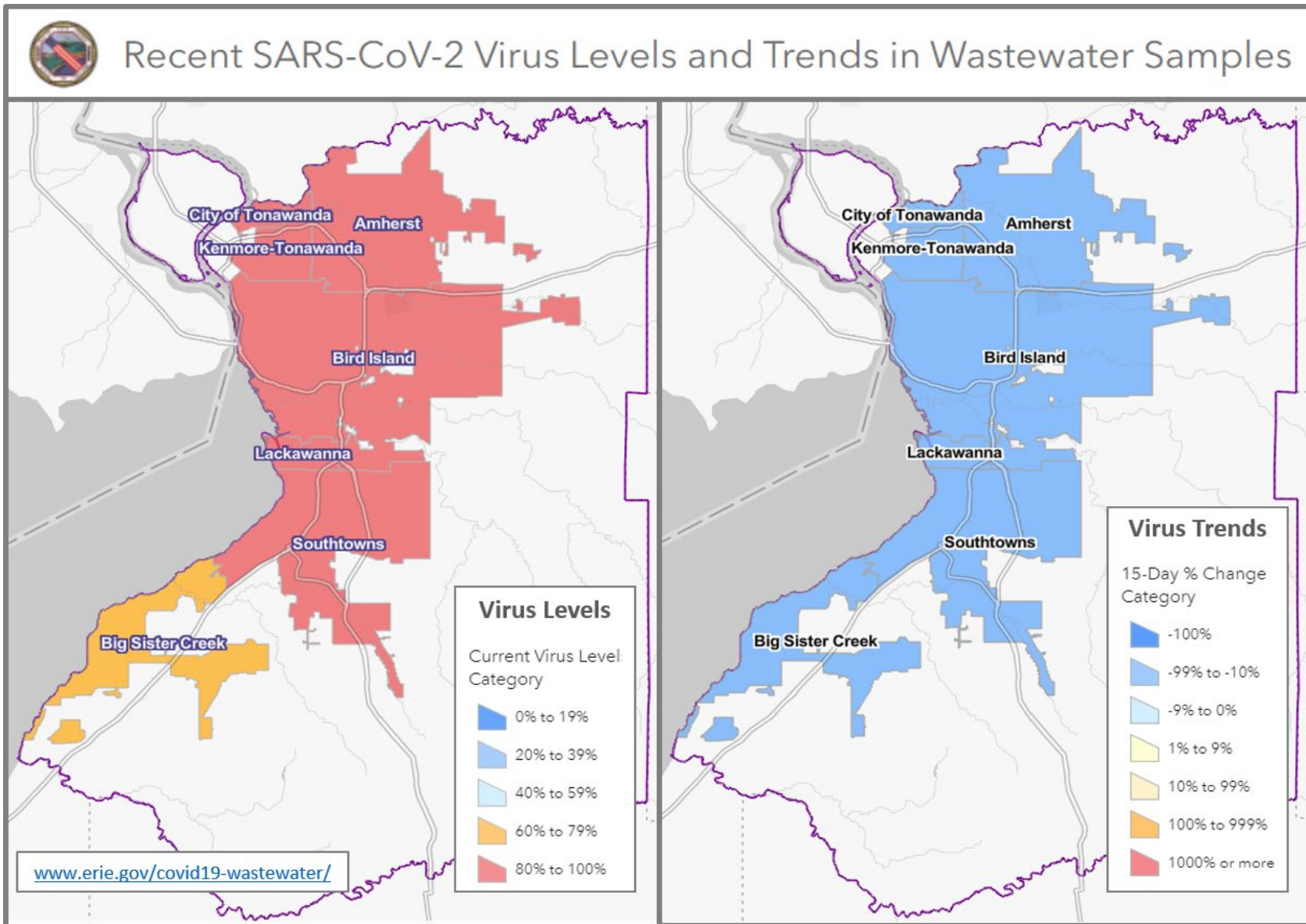
Table 1

New Cases in Past Seven Days, Past Six Weeks

Week Ending	New Cases in Past 7 Days	Total New Cases in the Past Seven Days per 100,000 Persons*
7/16/2022	1,181	123.8
7/23/2022	1,399	146.6
7/30/2022	1,391	145.8
8/6/2022	1,261	132.1
8/13/2022	1,213	127.1
8/20/2022	1,301	136.3

This metric shows trends over time.
*Population Source: 2020 U.S. Census Bureau

Figure 3: Erie County COVID-19 Wastewater Surveillance



Charts as of August 16, 2022

All data are provisional and represent data available at the time of the report.

Table 2

Confirmed COVID-19 Cases by ZIP Code

ZIP Code	City	Cases	Zip Code Population**	New Daily Cases per 100,000 Persons on 7-Day Rolling Average ¹	Total New Cases per 100,000 Persons in the Past 7 Days ²
14221	Amherst/Williamsville/Clarence	73	53,555	19.5	136.3
14150	Tonawanda	68	41,676	23.3	163.2
14075	Hamburg	64	41,937	21.8	152.6
14215	Buffalo (East)	61	39,999	21.8	152.5
14224	West Seneca	61	39,889	21.8	152.9
14225	Cheektowaga	55	33,385	23.5	164.7
14127	Orchard Park	54	29,961	25.7	180.2
14043	Depew	49	24,742	28.3	198.0
14220	Buffalo (South)	42	24,227	24.8	173.4
14227	Cheektowaga	42	23,426	25.6	179.3
14086	Lancaster	38	31,847	17.0	119.3
14226	Amherst (Snyder/Eggertsville)	36	29,267	17.6	123.0
14218	Lackawanna	33	19,039	24.8	173.3
14031	Clarence	32	9,392	48.7	340.7
14223	Tonawanda	32	22,665	20.2	141.2
14207	Buffalo (Black Rock/Riverside)	30	23,552	18.2	127.4
14211	Buffalo/Cheektowaga	28	22,611	17.7	123.8
14216	Buffalo (North)	28	22,431	17.8	124.8
14228	Amherst (Getzville)	27	20,857	18.5	129.5
14217	Kenmore	26	23,480	15.8	110.7
14072	Grand Island	24	20,374	16.8	117.8
14210	Buffalo (South)	24	14,694	23.3	163.3
14219	Blasdell	24	11,536	29.7	208.0
14206	Buffalo (Kaisertown)	22	20,751	15.1	106.0
14213	Buffalo (West Side)	22	24,465	12.8	89.9
14051	Amherst (East)	21	19,533	15.4	107.5
14052	Aurora	21	17,329	17.3	121.2
14214	Buffalo (University)	21	19,775	15.2	106.2
14068	Amherst (Getzville)	17	7,150	34.0	237.8
14006	Angola	16	9,858	23.2	162.3
14201	Buffalo (Downtown)	16	11,549	19.8	138.5
14212	Buffalo (Broadway)/Sloan	14	10,641	x	x
14222	Buffalo (Elmwood Village)	13	14,046	x	x
14204	Buffalo (East)	12	8,691	x	x
14209	Buffalo (Delaware)	12	7,926	x	x
14057	Eden	11	8,116	x	x
14208	Buffalo (east)	11	11,125	x	x
14059	Elma	10	8,933	x	x
14085	Hamburg (Lake View)	10	7,353	x	x
14047	Derby	9	6,440	x	x

All data are provisional and represent data available at the time of the report.

14032	Clarence (North)	8	7,989	x	x
14141	Springville	8	7,728	x	x
14001	Akron	7	9,464	x	x
14070	Gowanda	7	6,732	x	x
14004	Alden	6	12,704	x	x
14080	Holland	6	4,330	x	x
14081	Irving	6	3,095	x	x
14111	North Collins	6	3,352	x	x
14202	Buffalo (Downtown)	6	3,911	x	x
14091	Lawtons	5	1,079	x	x
14025	Boston	*	3,039	x	x
14026	Bowmansville	*	674	x	x
14030	Chaffee	*	1,807	x	x
14033	Colden	*	2,219	x	x
14034	Collins	*	2,742	x	x
14055	East Concord	*	1,405	x	x
14069	Glenwood	*	844	x	x
14102	Marilla	*	1,281	x	x
14139	Wales	*	2,125	x	x
14170	West Falls	*	2,286	x	x
14203	Buffalo	*	1,618	x	x
14231	Buffalo	*	n/a	x	x
14260-1426	Amherst (UB)	*	10,300	x	x
	All Erie County[†]	1,301	954,236	19.5	136.3

***Population Source: ZIP code data from U.S. Census Bureau, DP-1, General Population & Housing Characteristics*

ZCTAs are an approximation of mailing ZIP codes

Buffalo and Erie County from 2010 (U.S. Census Redistricting Data, PL 94-171) Summary File

¹ *Calculated by dividing total cases in past 7 days by 7, then dividing by ZIP code pop. & multiplying by 100,000*

² *Calculated by dividing total cases in the past 7 days by the zip code population, and multiplying by 100,000*

[†] *Total Population Value for Erie County (954,236) from 2020 U.S. Census Bureau used to calculate 'All Erie County' daily and 7-day case rates*

The New York State Department of Health maintains a COVID-19 data dashboard with county-level reporting.

<https://coronavirus.health.ny.gov/covid-19-data-new-york>

Figure 4a

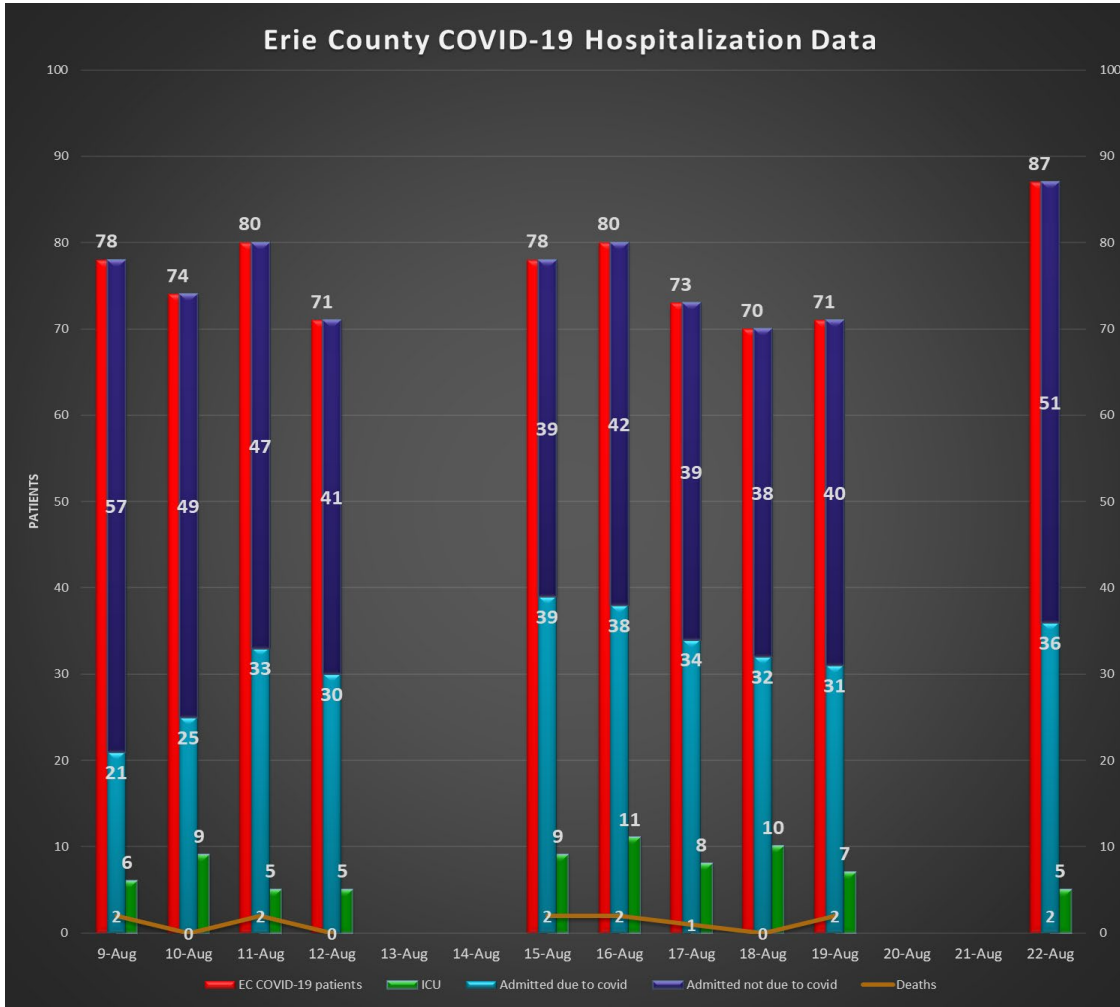
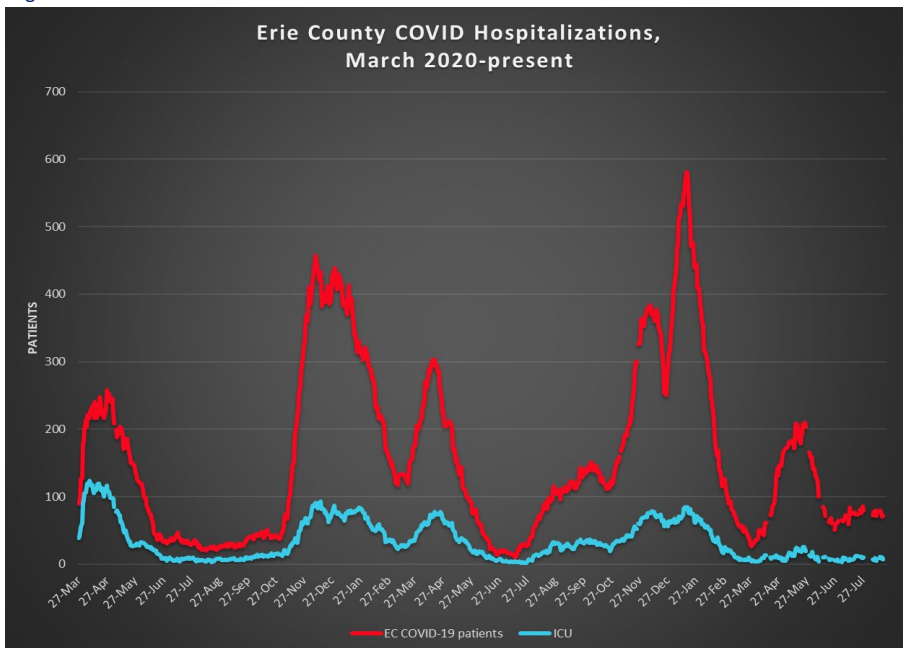


Figure 4b



Data provided by Erie County hospitals and NYSDOH. Patients may include residents from outside Erie County. See <https://coronavirus.health.ny.gov/daily-hospitalization-summary>

Section 2: COVID-19 Vaccine Information

Table 3

Erie County COVID-19 Vaccination Rates, Age & ZIP Code through August 23, 2022

ZIP Code	City	% of 0-19 population vaccinated (with at least 1 dose)	% of 20-34 population vaccinated (with at least 1 dose)	% of 35-64 population vaccinated (with at least 1 dose)	% of 65+ population vaccinated (with at least 1 dose)	% of 20+ Population Vaccinated (with at least 1 dose)
14112	North Evans	n/a	31.1%	n/a	46.7%	40.0%
14034	Collins	40.1%	29.5%	35.4%	89.9%	41.8%
14061	Farnham	9.8%	20.0%	47.1%	100.0%	43.1%
14070	Gowanda	31.1%	31.5%	46.1%	74.5%	47.8%
14035	Collins Center	11.8%	100.0%	37.2%	100.0%	50.0%
14030	Chaffee	20.4%	53.5%	53.3%	81.6%	59.8%
14170	West Falls	31.9%	74.9%	49.1%	100.0%	61.0%
14111	North Collins	31.6%	56.2%	61.2%	100.0%	66.0%
14004	Alden	29.4%	54.1%	63.4%	84.8%	66.6%
14055	East Concord	33.1%	67.9%	58.5%	100.0%	68.2%
14025	Boston	36.3%	87.0%	63.1%	69.9%	68.7%
14080	Holland	30.7%	59.9%	61.8%	96.4%	69.3%
14210	Buffalo	37.9%	57.6%	74.6%	84.9%	70.3%
14206	Buffalo	41.3%	63.8%	75.1%	79.1%	72.8%
14001	Akron	38.2%	61.0%	66.8%	100.0%	73.5%
14208	Buffalo	35.9%	62.0%	86.3%	70.8%	73.9%
14222	Buffalo (Elmwood Village)	39.6%	60.7%	90.1%	80.7%	74.4%
14219	Blasdell	38.3%	61.0%	73.8%	97.0%	75.1%
14047	Derby	38.4%	66.7%	69.9%	100.0%	76.2%
14091	Lawtons	44.3%	45.2%	86.5%	90.6%	76.5%
14006	Angola	34.7%	67.7%	75.7%	86.8%	77.3%
14102	Marilla	33.7%	53.0%	82.4%	94.6%	77.5%
14141	Springville	33.2%	71.7%	70.5%	97.3%	77.6%
14215	Buffalo	37.1%	65.9%	79.1%	100.0%	77.8%
14059	Elma	38.4%	70.2%	74.1%	89.3%	78.0%
14204	Buffalo	37.8%	74.0%	76.5%	89.1%	78.3%
14069	Glenwood	38.6%	86.7%	70.8%	90.3%	78.5%
14218	Lackawanna	31.5%	61.8%	80.5%	97.6%	78.8%
14139	South Wales	35.8%	93.2%	68.7%	100.0%	80.0%
14211	Buffalo	45.3%	75.0%	80.6%	87.8%	80.1%
14057	Eden	45.2%	88.0%	71.0%	100.0%	80.7%
14207	Buffalo	42.3%	62.5%	94.5%	90.4%	81.1%
14216	Buffalo	50.0%	69.3%	84.6%	100.0%	81.5%
14043	Depew	43.8%	70.0%	81.8%	93.6%	81.7%
14209	Buffalo	36.7%	74.2%	84.6%	100.0%	83.3%
14225	Cheektowaga	46.5%	66.5%	91.6%	92.3%	83.6%
14220	Buffalo	44.2%	74.2%	84.2%	98.3%	83.8%

All data are provisional and represent data available at the time of the report.

<https://covid19vaccine.health.ny.gov/vaccine-demographic-data>

14052	East Aurora	64.0%	84.0%	76.4%	100.0%	83.8%
14150	Tonawanda	46.8%	77.6%	82.9%	94.3%	84.6%
14031	Clarence	52.3%	74.3%	79.9%	100.0%	84.7%
14214	Buffalo	45.6%	79.3%	87.0%	94.0%	84.9%
14224	West Seneca	50.3%	78.7%	80.0%	100.0%	85.1%
14217	Kenmore	56.2%	88.4%	80.2%	93.0%	85.3%
14212	Buffalo	46.0%	83.8%	86.7%	86.3%	85.8%
14227	Cheektowaga	56.4%	73.8%	82.8%	100.0%	85.8%
14032	Clarence Center	54.4%	100.0%	79.2%	100.0%	86.2%
14201	Buffalo	34.7%	85.8%	83.3%	98.3%	86.4%
14213	Buffalo	36.6%	81.5%	90.4%	93.6%	87.0%
14169	Wales Center	62.1%		80.7%	100.0%	87.2%
14228	Amherst (Getzville)	56.4%	80.0%	91.4%	95.0%	87.7%
14075	Hamburg	53.9%	89.3%	80.9%	100.0%	87.7%
14202	Buffalo	45.7%	70.7%	100.0%	100.0%	87.8%
14072	Grand Island	53.3%	91.8%	83.0%	100.0%	88.7%
14051	East Amherst	66.0%	100.0%	82.3%	100.0%	89.0%
14223	Tonawanda	48.7%	86.2%	88.0%	100.0%	90.4%
14226	Amherst (Snyder/Eggertsville)	56.9%	87.9%	87.8%	100.0%	90.4%
14127	Orchard Park	59.6%	100.0%	84.2%	100.0%	91.3%
14086	Lancaster	56.3%	93.0%	87.7%	100.0%	91.5%
14026	Bowmansville	100.0%	100.0%	87.7%	100.0%	92.4%
14221	Amherst/Williamsville/Clarence	65.6%	100.0%	88.8%	97.1%	93.5%
14033	Colden	57.7%	100.0%	94.3%	95.7%	95.2%
14085	Lake View	59.6%	89.5%	99.8%	95.8%	96.7%
14068	Getzville	75.3%	100.0%	100.0%	94.3%	97.7%
14134	Sardinia	45.7%	100.0%	100.0%	100.0%	100.0%
14203	Buffalo	73.7%	100.0%	100.0%	100.0%	100.0%
Total*		47.0%	75.5%	81.9%	95.5%	83.3%

*9/7/2022 - totals for each age group corrected due to calculation error.

Section 3: COVID-19 Mortality Data

Table 4

Erie County COVID-19 Deaths by Age Group (January - December 2021)

Age Group	Jan	Feb	Mar	Apr	May	Jun	Jul	Aug	Sep	Oct	Nov	Dec	Total
<40	3	4	0	4	2	0	1	1	0	3	4	3	25
40 to 49	4	3	1	8	2	0	1	1	1	0	3	7	31
50 to 59	8	11	5	7	5	4	1	6	4	11	12	17	91
60 to 69	31	22	6	24	11	5	1	6	11	15	14	50	196
70 to 79	60	34	16	30	21	4	7	10	15	14	24	46	281
80+	163	62	29	27	24	5	1	17	24	38	40	66	496
Total # of Deaths	269	136	57	100	65	18	12	41	55	81	97	189	1,120
Ave. Death Age	81	76	77	71	74	70	70	74	77	76	73	73	76

Table 5

Erie County COVID-19 Deaths by Age Group (January 1-August 11, 2022)

Age Group	Jan	Feb	Mar	Apr	May	Jun	Jul	Aug	Total
<40	7	2	0	0	1	1	0	1	12
40 to 49	9	1	1	1	1	0	1	0	14
50 to 59	19	9	2	0	1	1	0	0	32
60 to 69	49	20	3	4	7	7	2	1	93
70 to 79	57	25	3	7	17	5	6	2	122
80+	90	40	10	17	37	11	9	3	217
Total # of Deaths	231	97	19	29	64	25	18	7	490
Ave. Death Age	74	76	78	80	81	76	79	76	76

2020 total deaths	1,276
2021 total deaths	1,120
2022 deaths to date	490
Total:	2,886

Table 6

Erie County COVID-19 Deaths by Residence

Residence	Fatalities	% of Fatalities	% of Population*
Buffalo	763	26.4%	29.2%
Erie County Excl. Buffalo	2,123	73.6%	70.8%
All of Erie County	2,886	100.0%	100.0%

*Population Source: Prepared from 2020 Census Bureau