



**Erie County  
Department of  
Health**



**Public Health**  
Prevent. Promote. Protect.

## COVID-19 Data Update

Week ending August 27, 2022

All data are provisional.

1,454 new COVID-19 cases were recorded for the week ending August 27, 2022. This is a 12% increase from the previous week's total (1,301 cases). This is a second consecutive week of weekly COVID-19 case increases. These data do not include at-home tests. The weekly COVID-19 positivity rate was 13.5%, an increase from the previous week's COVID-19 positivity rate of 12.9%. Overall reported COVID-19 diagnostic tests were stable, with 10,757 tests compared to 10,074 tests during the previous week.

7-day case rate per 100,000 persons was 152.4, up from 136.3 the previous week. Erie County is at a "medium" COVID-19 Community Level per CDC indicators, a shift from "low" the previous week. And, Erie County remains in "high" transmission per CDC community transmission metrics.

Buffalo city COVID-19 cases comprised 34.9% of new COVID-19 cases this past week. (Buffalo city population is 29.2% of all Erie County residents).

Erie County COVID-19 Wastewater Surveillance Data: See Figure 3. COVID-19 wastewater surveillance data through August 22, 2022 showed SARS-CoV-2 viral particles in the top 80-100% of samples collected since 12/1/21 within the Amherst, Bird Island, Lackawanna and Southtowns sewershed areas. Big Sister Creek and City of Tonawanda were in the 60-79% category, and Kenmore-Tonawanda was in the 40-59% category. All seven sewershed areas showed between a 99%-10% decrease over 15 days leading up to August 22. Collected data showed a decrease in detected viral particles over the past two weeks.

See <https://www.erie.gov/covid19-wastewater/>

Erie County COVID-19 Hospitalization Data: See Figures 4a and 4b. NYSDOH publishes updated hospitalization data by region at <https://coronavirus.health.ny.gov/daily-hospitalization-summary>.

Erie County COVID-19 Vaccination Data: See Section 2. NYSDOH updates vaccine data daily. Demographic data: <https://coronavirus.health.ny.gov/demographic-vaccination-data>.

Erie County COVID-19 Mortality Data: Mortality data are updated through July 26, 2022 based on data available to ECDOH. More recent data will be reported when available. NYSDOH reports COVID-19 mortality data at <https://coronavirus.health.ny.gov/fatalities-0>. See Section 3.

### CONTENTS

#### **Section 1: COVID-19 Case Data**

Figure 1: Confirmed COVID-19 Cases by Age Group & Gender (to date)	Page 1
Figure 2: Confirmed COVID-19 Cases by Age Group and Gender (latest week)	Page 1
Table 1: New COVID-19 Cases in the Past Seven Days	Page 1
Figure 3: Erie County COVID-19 Wastewater Surveillance	Page 2
Table 2: Confirmed COVID-19 Cases by ZIP Code	Page 3
Figures 4a and 4b: Erie County COVID-19 Hospitalizations	Page 5

#### **Section 2: COVID-19 Vaccination Data**

Table 3: Erie County COVID-19 Vaccination Rates by Age and ZIP Code	Page 6
---	--------

#### **Section 3: COVID-19 Mortality Data**

Tables 4 & 5: Erie County COVID-19 Deaths By Age Group	Page 8
Table 6: Erie County COVID-19 Deaths by Residence	Page 8

## Section 1: Confirmed COVID-19 Cases

Figure 1

**Confirmed COVID-19 Cases by Age Group and Gender (March 2020-present)**

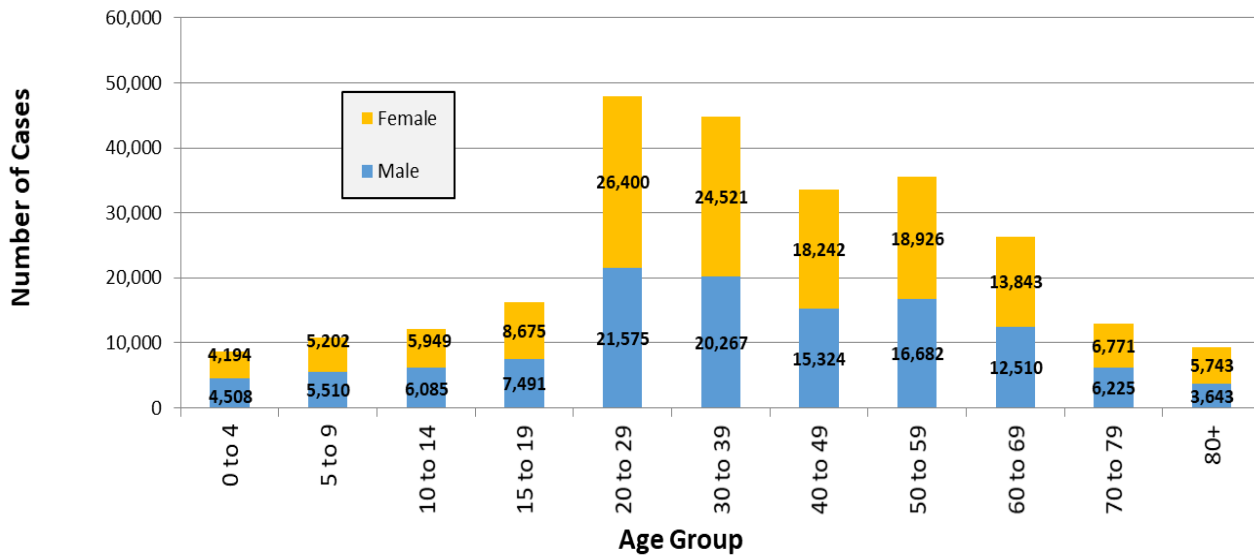


Figure 2

**Confirmed COVID-19 Cases by Age Group (August 21-27, 2022)**

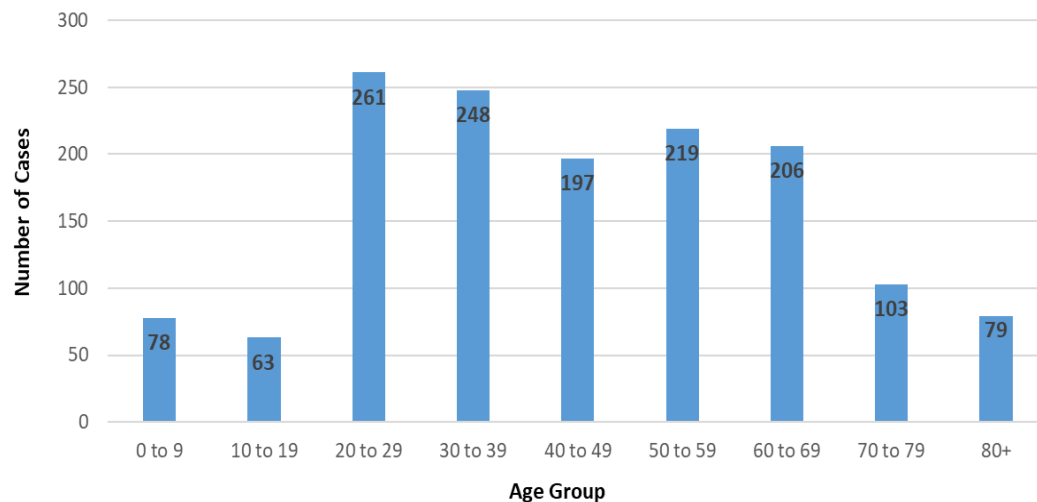


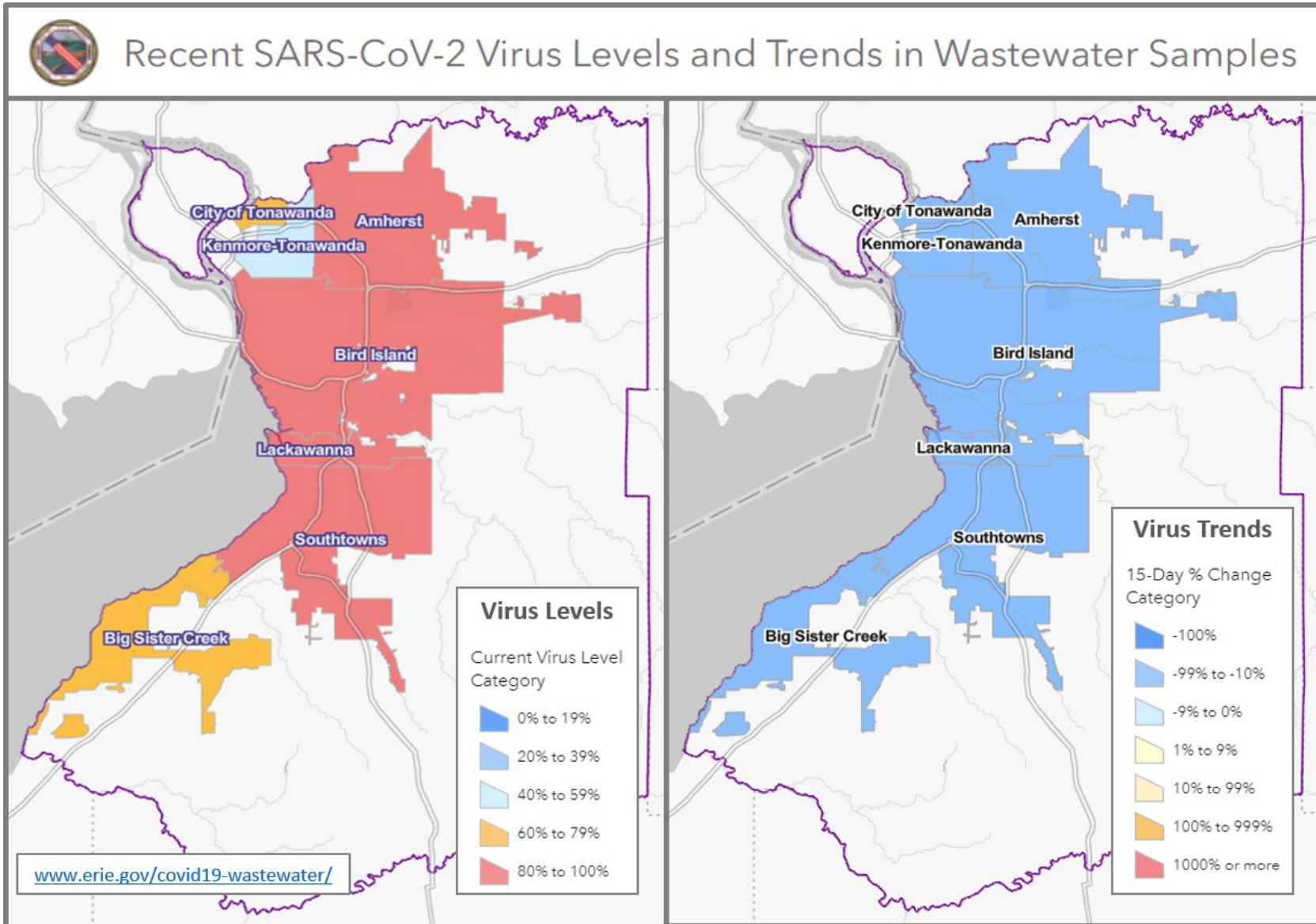
Table 1

**New Cases in Past Seven Days, Past Six Weeks**

Week Ending	New Cases in Past 7 Days	Total New Cases in the Past Seven Days per 100,000 Persons*
7/23/2022	1,399	146.6
7/30/2022	1,391	145.8
8/6/2022	1,261	132.1
8/13/2022	1,213	127.1
8/20/2022	1,301	136.3
8/27/2022	1,454	152.4

This metric shows trends over time.  
\*Population Source: 2020 U.S. Census Bureau

Figure 3: Erie County COVID-19 Wastewater Surveillance



Charts as of August 22, 2022

All data are provisional and represent data available at the time of the report.

Table 2

**Confirmed COVID-19 Cases by ZIP Code**

ZIP Code	City	Cases	Zip Code Population**	New Daily Cases per 100,000 Persons on 7-Day Rolling Average <sup>1</sup>	Total New Cases per 100,000 Persons in the Past 7 Days <sup>2</sup>
14221	Amherst/Williamsville/Clarence	93	53,555	24.8	173.7
14215	Buffalo (East)	80	39,999	28.6	200.0
14225	Cheektowaga	72	33,385	30.8	215.7
14075	Hamburg	65	41,937	22.1	155.0
14150	Tonawanda	63	41,676	21.6	151.2
14224	West Seneca	55	39,889	19.7	137.9
14227	Cheektowaga	48	23,426	29.3	204.9
14220	Buffalo (South)	46	24,227	27.1	189.9
14218	Lackawanna	45	19,039	33.8	236.4
14086	Lancaster	41	31,847	18.4	128.7
14127	Orchard Park	41	29,961	19.5	136.8
14226	Amherst (Snyder/Eggertsville)	41	29,267	20.0	140.1
14228	Amherst (Getzville)	41	20,857	28.1	196.6
14216	Buffalo (North)	37	22,431	23.6	165.0
14051	Amherst (East)	36	19,533	26.3	184.3
14207	Buffalo (Black Rock/Riverside)	36	23,552	21.8	152.9
14214	Buffalo (University)	35	19,775	25.3	177.0
14223	Tonawanda	35	22,665	22.1	154.4
14206	Buffalo (Kaisertown)	34	20,751	23.4	163.8
14211	Buffalo/Cheektowaga	33	22,611	20.8	145.9
14213	Buffalo (West Side)	31	24,465	18.1	126.7
14217	Kenmore	30	23,480	18.3	127.8
14043	Depew	29	24,742	16.7	117.2
14072	Grand Island	29	20,374	20.3	142.3
14210	Buffalo (South)	26	14,694	25.3	176.9
14031	Clarence	24	9,392	36.5	255.5
14212	Buffalo (Broadway)/Sloan	23	10,641	30.9	216.1
14219	Blasdell	22	11,536	27.2	190.7
14204	Buffalo (East)	20	8,691	32.9	230.1
14222	Buffalo (Elmwood Village)	19	14,046	19.3	135.3
14004	Alden	18	12,704	20.2	141.7
14052	Aurora	18	17,329	14.8	103.9
14201	Buffalo (Downtown)	17	11,549	21.0	147.2
14208	Buffalo (east)	17	11,125	21.8	152.8
14209	Buffalo (Delaware)	13	7,926	x	x
14085	Hamburg (Lake View)	12	7,353	x	x
14047	Derby	11	6,440	x	x
14006	Angola	10	9,858	x	x
14001	Akron	9	9,464	x	x
14059	Elma	9	8,933	x	x

All data are provisional and represent data available at the time of the report.

14202	Buffalo (Downtown)	9	3,911	x	x
14032	Clarence (North)	8	7,989	x	x
14057	Eden	7	8,116	x	x
14081	Irving	6	3,095	x	x
14141	Springville	6	7,728	x	x
14055	East Concord	5	1,405	x	x
14068	Amherst (Getzville)	5	7,150	x	x
14070	Gowanda	5	6,732	x	x
14170	West Falls	5	2,286	x	x
14025	Boston	*	3,039	x	x
14026	Bowmansville	*	674	x	x
14030	Chaffee	*	1,807	x	x
14033	Colden	*	2,219	x	x
14034	Collins	*	2,742	x	x
14069	Glenwood	*	844	x	x
14080	Holland	*	4,330	x	x
14091	Lawtons	*	1,079	x	x
14102	Marilla	*	1,281	x	x
14111	North Collins	*	3,352	x	x
14139	Wales	*	2,125	x	x
14203	Buffalo	*	1,618	x	x
14231	Buffalo	*	n/a	x	x
14260-1426	Amherst (UB)	*	10,300	x	x
	<b>All Erie County<sup>†</sup></b>	<b>1,454</b>	<b>954,236</b>	<b>21.8</b>	<b>152.4</b>

*\*\*Population Source: ZIP code data from U.S. Census Bureau, DP-1, General Population & Housing Characteristics*

*ZCTAs are an approximation of mailing ZIP codes*

*Buffalo and Erie County from 2010 (U.S. Census Redistricting Data, PL 94-171) Summary File*

<sup>1</sup> *Calculated by dividing total cases in past 7 days by 7, then dividing by ZIP code pop. & multiplying by 100,000*

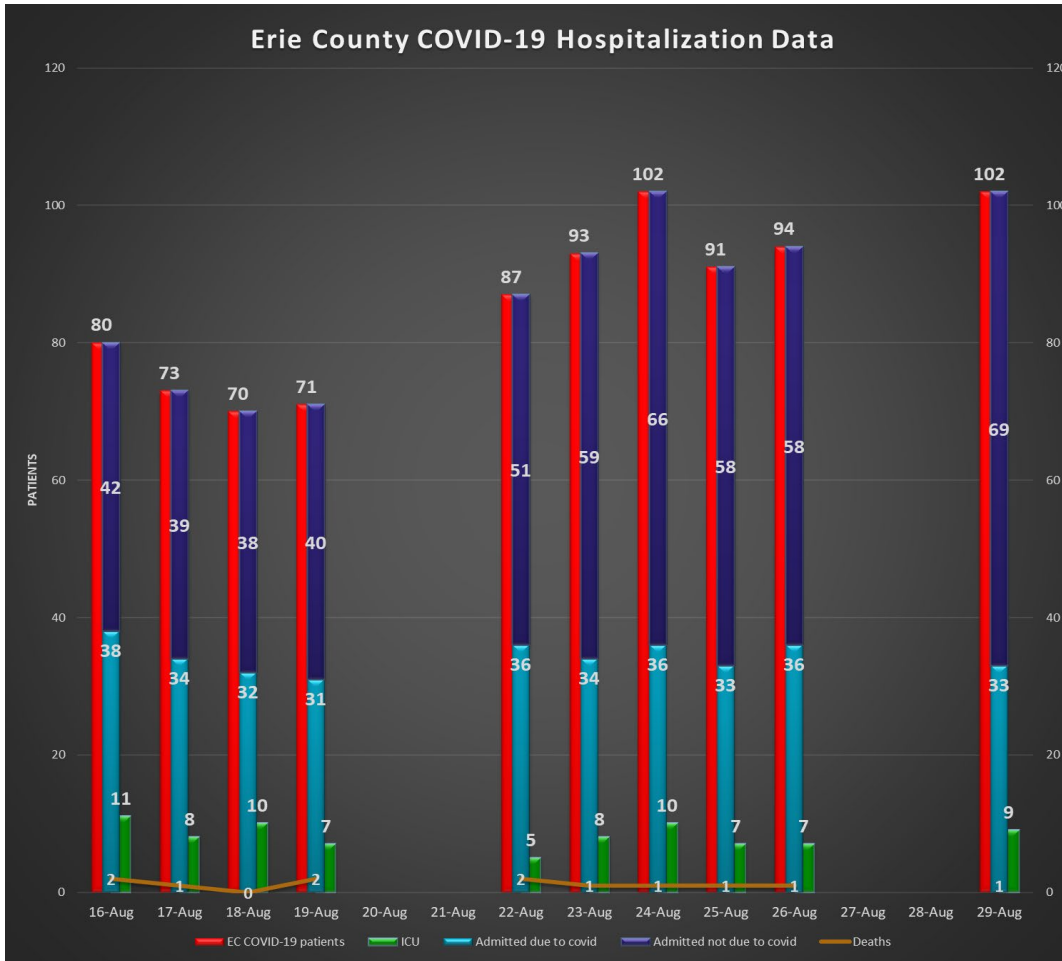
<sup>2</sup> *Calculated by dividing total cases in the past 7 days by the zip code population, and multiplying by 100,000*

<sup>†</sup> *Total Population Value for Erie County (954,236) from 2020 U.S. Census Bureau used to calculate 'All Erie County' daily and 7-day case rates*

The New York State Department of Health maintains a COVID-19 data dashboard with county-level reporting.

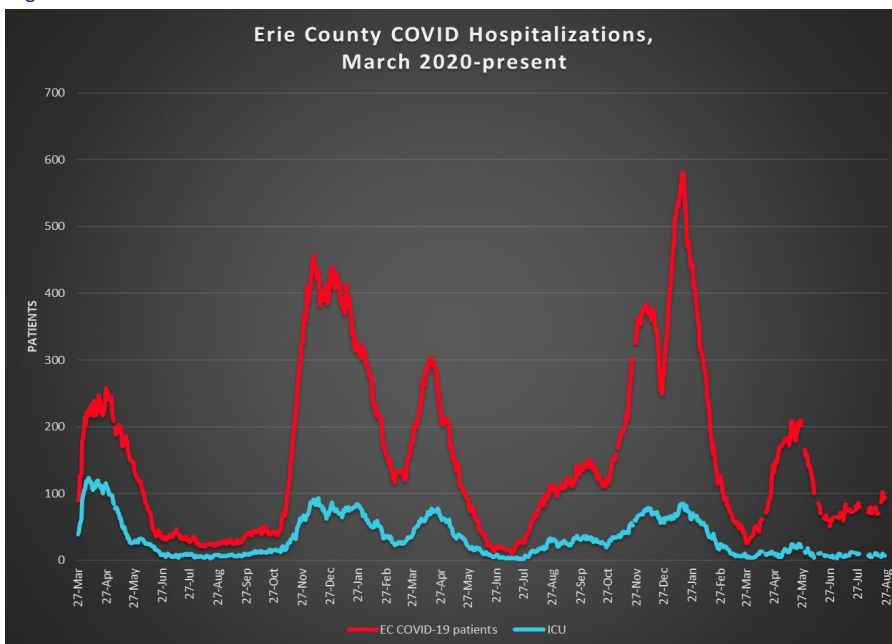
<https://coronavirus.health.ny.gov/covid-19-data-new-york>

Figure 4a



Most recent available data from NYSDOH included.

Figure 4b



Data provided by Erie County hospitals and NYSDOH. Patients may include residents from outside Erie County. See <https://coronavirus.health.ny.gov/daily-hospitalization-summary>

**Section 2: COVID-19 Vaccine Information**

Table 3

**Erie County COVID-19 Vaccination Rates, Age & ZIP Code through August 30, 2022**

ZIP Code	City	% of 0-19 population vaccinated (with at least 1 dose)	% of 20-34 population vaccinated (with at least 1 dose)	% of 35-64 population vaccinated (with at least 1 dose)	% of 65+ population vaccinated (with at least 1 dose)	% of 20+ Population Vaccinated (with at least 1 dose)
14112	North Evans	n/a	31.1%	n/a	46.7%	40.0%
14034	Collins	40.1%	29.5%	35.5%	89.9%	41.8%
14061	Farnham	9.8%	20.0%	47.1%	100.0%	43.1%
14070	Gowanda	31.3%	31.5%	46.1%	74.4%	47.8%
14035	Collins Center	11.8%	100.0%	39.5%	100.0%	51.9%
14030	Chaffee	20.7%	53.5%	53.3%	81.3%	59.7%
14170	West Falls	31.9%	74.9%	49.1%	100.0%	61.0%
14111	North Collins	32.0%	56.3%	61.1%	100.0%	65.9%
14004	Alden	29.4%	54.2%	63.4%	84.7%	66.6%
14055	East Concord	33.1%	67.9%	58.6%	100.0%	68.3%
14025	Boston	36.7%	86.7%	63.1%	69.7%	68.6%
14080	Holland	31.0%	59.8%	61.8%	96.3%	69.2%
14210	Buffalo	38.3%	57.6%	74.7%	84.7%	70.3%
14206	Buffalo	41.5%	63.8%	75.1%	79.2%	72.8%
14001	Akron	38.4%	61.1%	66.8%	100.0%	73.5%
14208	Buffalo	36.2%	62.1%	86.3%	70.8%	73.9%
14222	Buffalo (Elmwood Village)	40.0%	60.7%	90.2%	80.8%	74.4%
14219	Blasdell	38.3%	61.0%	73.8%	96.9%	75.1%
14047	Derby	38.3%	66.6%	69.9%	100.0%	76.1%
14091	Lawtons	44.3%	45.2%	86.5%	90.6%	76.5%
14006	Angola	34.9%	67.7%	75.7%	86.8%	77.3%
14102	Marilla	34.3%	53.0%	82.4%	94.6%	77.5%
14141	Springville	33.2%	71.5%	70.5%	97.3%	77.6%
14215	Buffalo	37.3%	66.0%	79.2%	100.0%	77.8%
14059	Elma	38.6%	70.2%	74.1%	89.3%	78.0%
14069	Glenwood	38.6%	86.7%	70.2%	90.3%	78.2%
14204	Buffalo	37.9%	73.9%	76.7%	89.0%	78.3%
14218	Lackawanna	31.7%	61.9%	80.5%	97.5%	78.8%
14139	South Wales	35.8%	92.7%	68.8%	100.0%	80.0%
14211	Buffalo	45.6%	75.2%	80.6%	87.9%	80.2%
14057	Eden	45.4%	88.0%	71.0%	100.0%	80.7%
14207	Buffalo	42.6%	62.7%	94.6%	90.3%	81.1%
14216	Buffalo	50.3%	69.3%	84.6%	100.0%	81.5%
14043	Depew	44.1%	70.1%	81.9%	93.6%	81.7%
14209	Buffalo	36.8%	74.3%	84.7%	100.0%	83.4%
14225	Cheektowaga	46.8%	66.5%	91.6%	92.4%	83.6%
14220	Buffalo	44.3%	74.3%	84.2%	98.4%	83.8%

All data are provisional and represent data available at the time of the report.

<https://covid19vaccine.health.ny.gov/vaccine-demographic-data>

14052	East Aurora	64.2%	84.1%	76.4%	100.0%	83.9%
14150	Tonawanda	47.0%	77.6%	82.9%	94.3%	84.6%
14031	Clarence	52.3%	74.4%	79.9%	100.0%	84.8%
14214	Buffalo	45.8%	79.4%	87.0%	94.1%	84.9%
14224	West Seneca	50.4%	78.8%	80.0%	100.0%	85.1%
14217	Kenmore	56.4%	88.4%	80.2%	93.0%	85.3%
14227	Cheektowaga	56.5%	73.9%	82.8%	100.0%	85.8%
14212	Buffalo	46.1%	83.8%	86.7%	86.4%	85.8%
14032	Clarence Center	54.6%	100.0%	79.2%	100.0%	86.2%
14201	Buffalo	34.9%	85.8%	83.3%	98.1%	86.4%
14213	Buffalo	36.9%	81.6%	90.5%	93.6%	87.1%
14169	Wales Center	62.1%	n/a	80.7%	100.0%	87.2%
14075	Hamburg	54.2%	89.3%	80.9%	100.0%	87.7%
14228	Amherst (Getzville)	56.8%	80.1%	91.5%	95.1%	87.7%
14202	Buffalo	45.2%	70.8%	100.0%	100.0%	87.9%
14072	Grand Island	53.5%	91.8%	83.0%	100.0%	88.7%
14051	East Amherst	66.3%	100.0%	82.3%	100.0%	89.0%
14223	Tonawanda	49.0%	86.3%	88.0%	100.0%	90.4%
14226	Amherst (Snyder/Eggertsville)	57.1%	87.9%	87.8%	100.0%	90.5%
14127	Orchard Park	59.9%	100.0%	84.3%	100.0%	91.3%
14086	Lancaster	56.4%	93.0%	87.7%	100.0%	91.6%
14026	Bowmansville	100.0%	100.0%	87.7%	100.0%	92.4%
14221	Amherst/Williamsville/Clare	65.8%	100.0%	88.8%	97.1%	93.5%
14033	Colden	58.0%	100.0%	94.3%	96.1%	95.4%
14085	Lake View	59.9%	89.7%	99.8%	95.7%	96.7%
14068	Getzville	75.5%	100.0%	100.0%	94.3%	97.7%
14134	Sardinia	48.6%	100.0%	100.0%	100.0%	100.0%
14203	Buffalo	73.2%	100.0%	100.0%	100.0%	100.0%
<b>Total*</b>		<b>47.2%</b>	<b>75.6%</b>	<b>81.9%</b>	<b>95.5%</b>	<b>83.3%</b>

\*9/7/2022 - totals for each age group corrected due to calculation error.



## Section 3: COVID-19 Mortality Data

Table 4

### Erie County COVID-19 Deaths by Age Group (January - December 2021)

Age Group	Jan	Feb	Mar	Apr	May	Jun	Jul	Aug	Sep	Oct	Nov	Dec	Total
<40	3	4	0	4	2	0	1	1	0	3	4	3	25
40 to 49	4	3	1	8	2	0	1	1	1	0	3	7	31
50 to 59	8	11	5	7	5	4	1	6	4	11	12	17	91
60 to 69	31	22	6	24	11	5	1	6	11	15	14	50	196
70 to 79	60	34	16	30	21	4	7	10	15	14	24	46	281
80+	163	62	29	27	24	5	1	17	24	38	40	66	496
<b>Total # of Deaths</b>	<b>269</b>	<b>136</b>	<b>57</b>	<b>100</b>	<b>65</b>	<b>18</b>	<b>12</b>	<b>41</b>	<b>55</b>	<b>81</b>	<b>97</b>	<b>189</b>	<b>1,120</b>
<b>Ave. Death Age</b>	<b>81</b>	<b>76</b>	<b>77</b>	<b>71</b>	<b>74</b>	<b>70</b>	<b>70</b>	<b>74</b>	<b>77</b>	<b>76</b>	<b>73</b>	<b>73</b>	<b>76</b>

Table 5

### Erie County COVID-19 Deaths by Age Group (January 1-August 11, 2022)

Age Group	Jan	Feb	Mar	Apr	May	Jun	Jul	Aug	Total
<40	7	2	0	0	1	1	0	1	12
40 to 49	9	1	1	1	1	0	1	0	14
50 to 59	19	9	2	0	1	1	0	0	32
60 to 69	49	20	3	4	7	7	2	1	93
70 to 79	57	25	3	7	17	5	6	2	122
80+	90	40	10	17	37	11	9	3	217
<b>Total # of Deaths</b>	<b>231</b>	<b>97</b>	<b>19</b>	<b>29</b>	<b>64</b>	<b>25</b>	<b>18</b>	<b>7</b>	<b>490</b>
<b>Ave. Death Age</b>	<b>74</b>	<b>76</b>	<b>78</b>	<b>80</b>	<b>81</b>	<b>76</b>	<b>79</b>	<b>76</b>	<b>76</b>

2020 total deaths	1,276
2021 total deaths	1,120
2022 deaths to date	490
<b>Total:</b>	<b>2,886</b>

Table 6

### Erie County COVID-19 Deaths by Residence

Residence	Fatalities	% of Fatalities	% of Population*
Buffalo	763	26.4%	29.2%
Erie County Excl. Buffalo	2,123	73.6%	70.8%
<b>All of Erie County</b>	<b>2,886</b>	<b>100.0%</b>	<b>100.0%</b>

\*Population Source: Prepared from 2020 Census Bureau

Latest mortality data available is through August 11, 2022.