



**Erie County
Department of
Health**



Public Health
Prevent. Promote. Protect.

COVID-19 Data Update

Week ending November 5, 2022

All data are provisional.

1,206 new COVID-19 cases were recorded for the week ending November 5, 2022. This is a decrease from the previous week's total of 1,304 cases. These data do not include at-home tests. The weekly COVID-19 positivity rate decreased from 12.5% to 10.4%. 11,603 overall reported COVID-19 diagnostic tests showed a slight increase from the previous week's total of 10,418 tests.

7-day case rate per 100,000 persons was 126.4, a decrease from the previous week's rate of 136.7. Erie County remains in a "medium" COVID-19 Community Level per CDC indicators. And, Erie County remains in "high" transmission per CDC community transmission metrics.

Buffalo city COVID-19 cases comprised 33.6% of new COVID-19 cases this past week. (Buffalo city population is 29.2% of all Erie County residents).

Erie County COVID-19 Wastewater Surveillance Data: The most recent COVID-19 wastewater surveillance data through November 3, 2022 (unless otherwise noted) showed SARS-CoV-2 viral particles in the top 60-79% of samples collected since 12/1/21 within the City of Tonawanda sewershed. Amherst, Bird Island, Kenmore-Tonawanda, Lackawanna, Southtowns, and Big Sister Creek (through 11/1) were in the 40-59% category.

Over the past two weeks the Big Sister Creek sewershed showed a 99-10% decrease through 11/1; Southtowns showed a 9-0% decrease; Bird Island, City of Tonawanda, Kenmore-Tonawanda and Lackawanna showed a 10-99% increase; Amherst showed a 100-999%. See <https://www.erie.gov/covid19-wastewater>

Erie County COVID-19 Hospitalization Data: See Figures 4a and 4b. NYSDOH publishes updated hospitalization data by region at <https://coronavirus.health.ny.gov/daily-hospitalization-summary>.

Erie County COVID-19 Vaccination Data: See Section 2. NYSDOH updates vaccine data daily. Demographic data: <https://coronavirus.health.ny.gov/demographic-vaccination-data>.

Erie County COVID-19 Mortality Data: Mortality data are updated through October 20, 2022 based on data available to ECDOH. More recent data will be reported when available. NYSDOH reports COVID-19 mortality data at <https://coronavirus.health.ny.gov/fatalities-0>. See Section 3.

CONTENTS

Section 1: COVID-19 Case Data

Figure 1: Confirmed COVID-19 Cases by Age Group & Gender (to date)	Page 1
Figure 2: Confirmed COVID-19 Cases by Age Group and Gender (latest week)	Page 1
Table 1: New COVID-19 Cases in the Past Seven Days	Page 1
Figure 3: Erie County COVID-19 Wastewater Surveillance	Page 2
Table 2: Confirmed COVID-19 Cases by ZIP Code	Page 3
Figures 4a and 4b: Erie County COVID-19 Hospitalizations	Page 5

Section 2: COVID-19 Vaccination Data

Table 3: Erie County COVID-19 Vaccination Rates by Age and ZIP Code	Page 6
---	--------

Section 3: COVID-19 Mortality Data

Tables 4 & 5: Erie County COVID-19 Deaths By Age Group	Page 8
Table 6: Erie County COVID-19 Deaths by Residence	Page 8

Section 1: Confirmed COVID-19 Cases

Figure 1

Confirmed COVID-19 Cases by Age Group and Gender (March 2020-present)

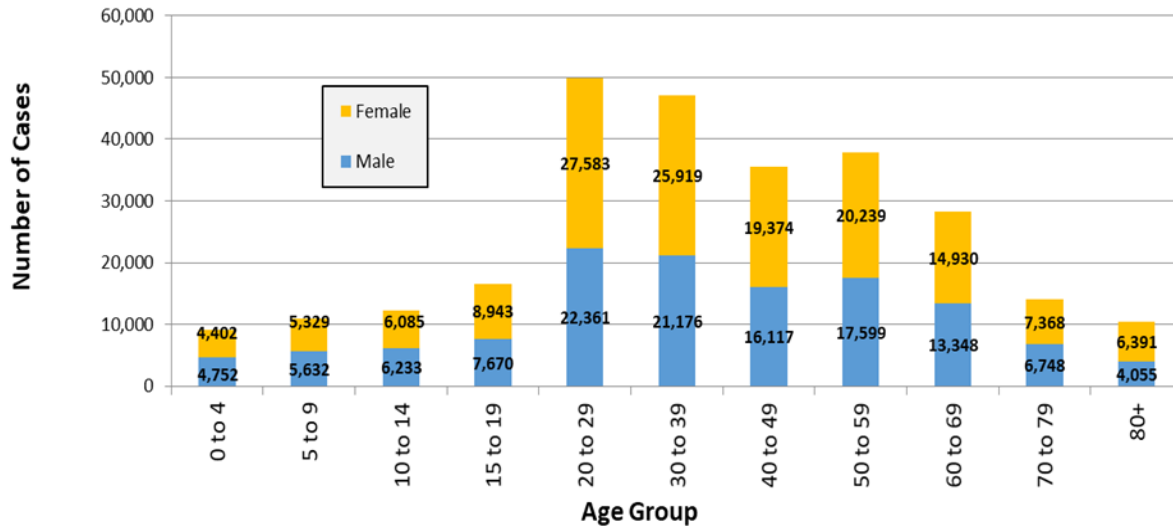


Figure 2

Confirmed COVID-19 Cases by Age Group (October 30-November 5, 2022)

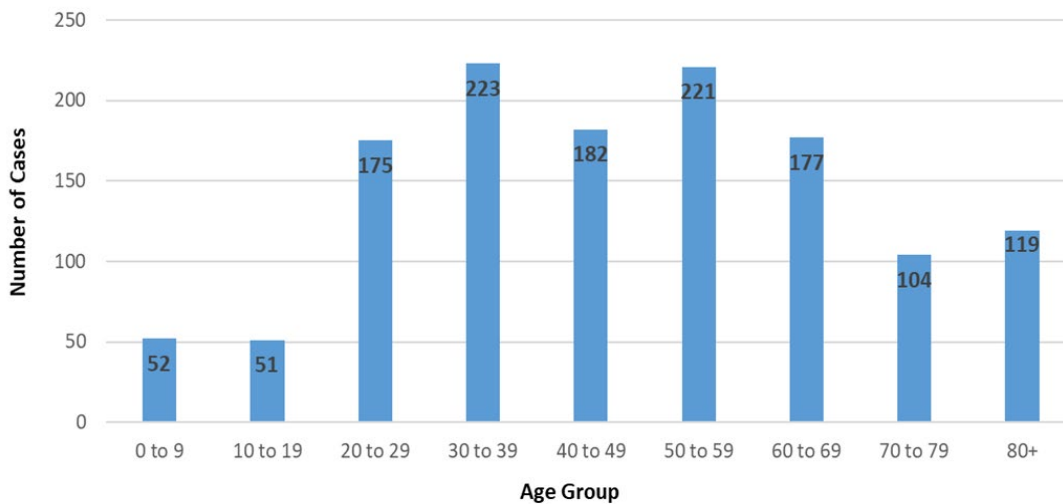


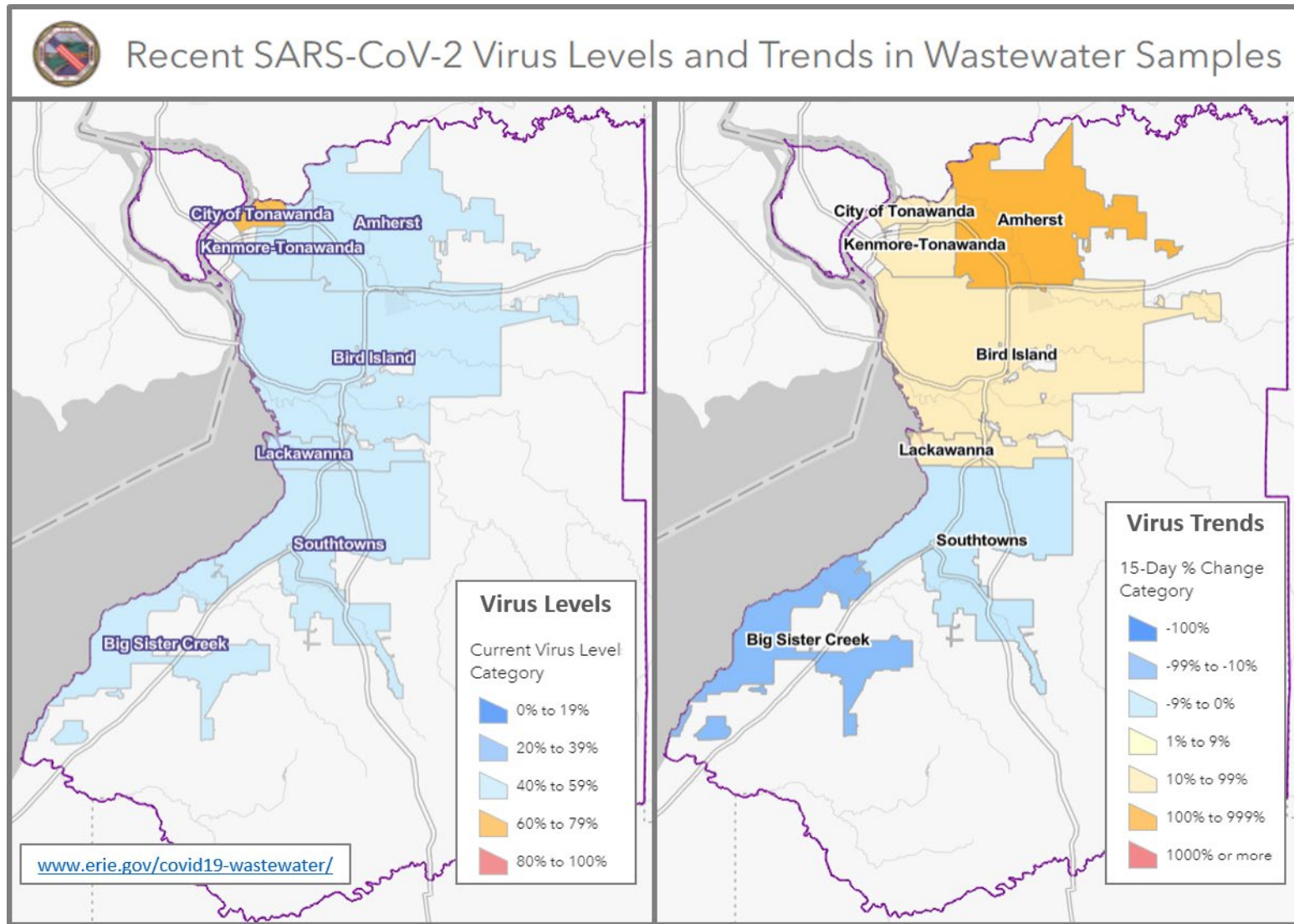
Table 1

New Cases in Past Seven Days, Past Six Weeks

Week Ending	New Cases in Past 7 Days	Total New Cases in the Past Seven Days per 100,000 Persons*
10/1/2022	1,517	159.0
10/8/2022	1,558	163.3
10/15/2022	1,300	136.2
10/22/2022	1,311	137.4
10/29/2022	1,304	136.7
11/5/2022	1,206	126.4

This metric shows trends over time.
*Population Source: 2020 U.S. Census Bureau

Figure 3: Erie County COVID-19 Wastewater Surveillance



All data are provisional and represent data available at the time of the report.

Table 2

Confirmed COVID-19 Cases by ZIP Code

ZIP Code	City	Cases	Zip Code Population**	New Daily Cases per 100,000 Persons on 7-Day Rolling Average ¹	Total New Cases per 100,000 Persons in the Past 7 Days ²
14215	Buffalo (East)	72	39,999	25.7	180.0
14075	Hamburg	57	41,937	19.4	135.9
14225	Cheektowaga	57	33,385	24.4	170.7
14150	Tonawanda	54	41,676	18.5	129.6
14221	Amherst/Williamsville/Clarendon	54	53,555	14.4	100.8
14224	West Seneca	50	39,889	17.9	125.3
14216	Buffalo (North)	47	22,431	29.9	209.5
14226	Amherst (Snyder/Eggertsville)	46	29,267	22.5	157.2
14206	Buffalo (Kaisertown)	44	20,751	30.3	212.0
14223	Tonawanda	41	22,665	25.8	180.9
14086	Lancaster	40	31,847	17.9	125.6
14218	Lackawanna	39	19,039	29.3	204.8
14127	Orchard Park	38	29,961	18.1	126.8
14227	Cheektowaga	35	23,426	21.3	149.4
14217	Kenmore	34	23,480	20.7	144.8
14207	Buffalo (Black Rock/Riverside)	31	23,552	18.8	131.6
14211	Buffalo/Cheektowaga	31	22,611	19.6	137.1
14043	Depew	29	24,742	16.7	117.2
14213	Buffalo (West Side)	29	24,465	16.9	118.5
14220	Buffalo (South)	29	24,227	17.1	119.7
14072	Grand Island	23	20,374	16.1	112.9
14228	Amherst (Getzville)	23	20,857	15.8	110.3
14051	Amherst (East)	22	19,533	16.1	112.6
14210	Buffalo (South)	20	14,694	19.4	136.1
14214	Buffalo (University)	19	19,775	13.7	96.1
14219	Blasdell	19	11,536	23.5	164.7
14208	Buffalo (east)	16	11,125	20.5	143.8
14202	Buffalo (Downtown)	15	3,911	54.8	383.5
14057	Eden	14	8,116	x	x
14201	Buffalo (Downtown)	13	11,549	x	x
14212	Buffalo (Broadway)/Sloan	13	10,641	x	x
14031	Clarence	12	9,392	x	x
14052	Aurora	12	17,329	x	x
14222	Buffalo (Elmwood Village)	12	14,046	x	x
14006	Angola	11	9,858	x	x
14204	Buffalo (East)	11	8,691	x	x
14141	Springville	10	7,728	x	x
14085	Hamburg (Lake View)	9	7,353	x	x
14068	Amherst (Getzville)	8	7,150	x	x
14209	Buffalo (Delaware)	8	7,926	x	x

All data are provisional and represent data available at the time of the report.

14004	Alden	7	12,704	x	x
14025	Boston	7	3,039	x	x
14032	Clarence (North)	5	7,989	x	x
14059	Elma	5	8,933	x	x
14001	Akron	*	9,464	x	x
14026	Bowmansville	*	674	x	x
14030	Chaffee	*	1,807	x	x
14033	Colden	*	2,219	x	x
14034	Collins	*	2,742	x	x
14047	Derby	*	6,440	x	x
14055	East Concord	*	1,405	x	x
14069	Glenwood	*	844	x	x
14070	Gowanda	*	6,732	x	x
14080	Holland	*	4,330	x	x
14081	Irving	*	3,095	x	x
14091	Lawtons	*	1,079	x	x
14102	Marilla	*	1,281	x	x
14111	North Collins	*	3,352	x	x
14139	Wales	*	2,125	x	x
14170	West Falls	*	2,286	x	x
14203	Buffalo	*	1,618	x	x
14231	Buffalo	*	n/a	x	x
14260-1426	Amherst (UB)	*	10,300	x	x
	All Erie County[†]	1,206	954,236	18.1	126.4

***Population Source: ZIP code data from U.S. Census Bureau, DP-1, General Population & Housing Characteristics*

ZCTAs are an approximation of mailing ZIP codes

Buffalo and Erie County from 2010 (U.S. Census Redistricting Data, PL 94-171) Summary File

¹ *Calculated by dividing total cases in past 7 days by 7, then dividing by ZIP code pop. & multiplying by 100,000*

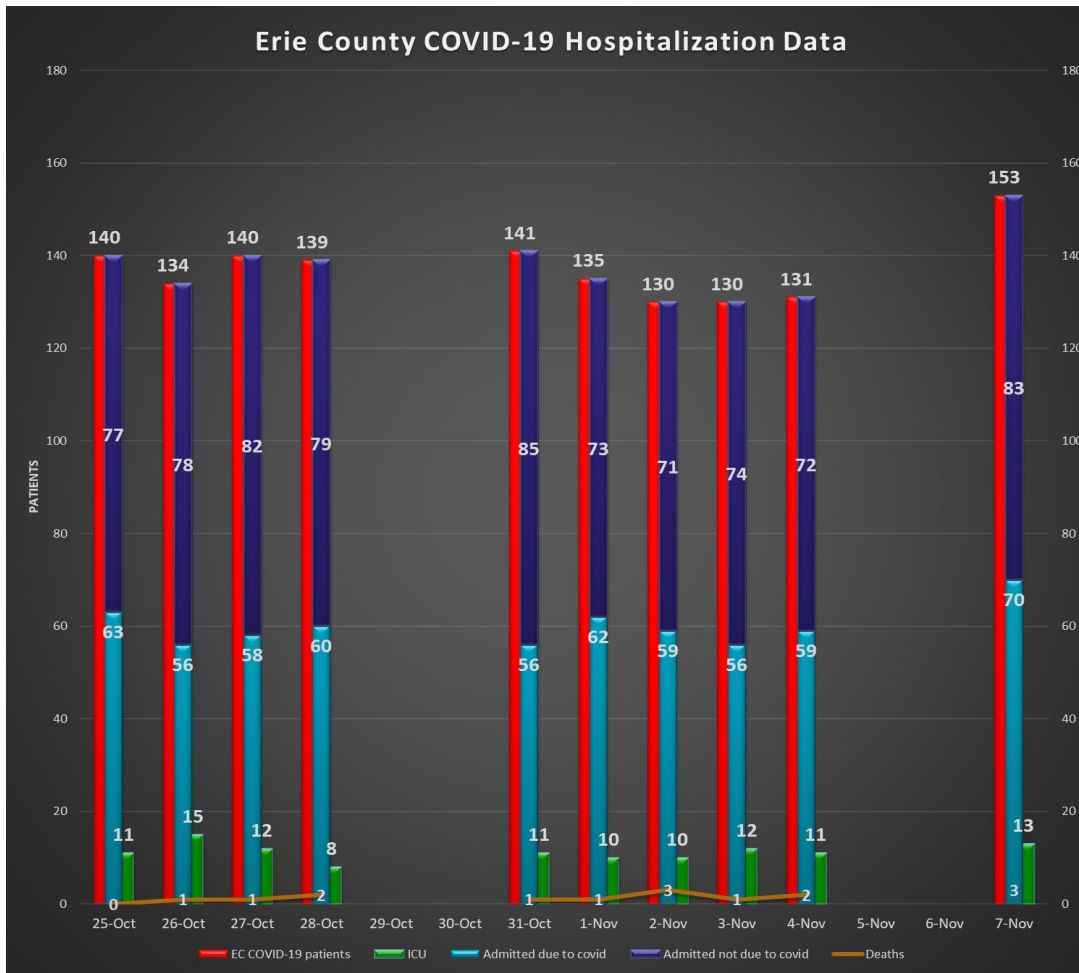
² *Calculated by dividing total cases in the past 7 days by the zip code population, and multiplying by 100,000*

[†] *Total Population Value for Erie County (954,236) from 2020 U.S. Census Bureau used to calculate 'All Erie County' daily and 7-day case rates*

The New York State Department of Health maintains a COVID-19 data dashboard with county-level reporting.

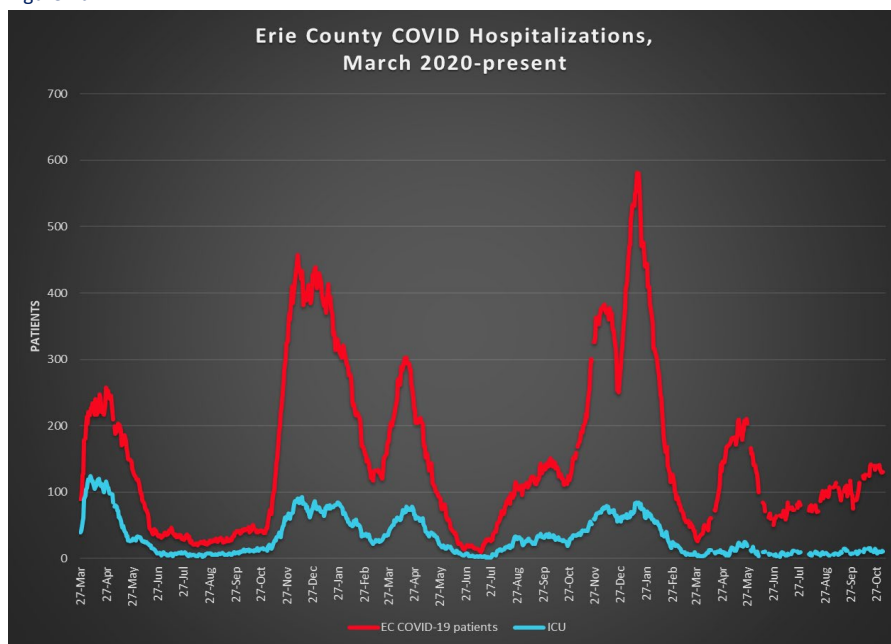
<https://coronavirus.health.ny.gov/covid-19-data-new-york>

Figure 4a



Most recent available data from NYSDOH included.

Figure 4b



Data provided by Erie County hospitals and NYSDOH. Patients may include residents from outside Erie County. See <https://coronavirus.health.ny.gov/daily-hospitalization-summary>

Section 2: COVID-19 Vaccine Information

Table 3

Erie County COVID-19 Vaccination Rates, Age & ZIP Code through October 31, 2022

ZIP Code	City	% of 0-19 population vaccinated (with at least 1 dose)	% of 20-34 population vaccinated (with at least 1 dose)	% of 35-64 population vaccinated (with at least 1 dose)	% of 65+ population vaccinated (with at least 1 dose)	% of 20+ Population Vaccinated (with at least 1 dose)
14112	North Evans	n/a	28.9%	n/a	46.7%	39.0%
14034	Collins	43.4%	30.0%	36.0%	90.5%	42.3%
14061	Farnham	9.8%	20.0%	47.7%	100.0%	43.5%
14070	Gowanda	31.5%	31.4%	46.4%	74.6%	48.0%
14035	Collins Center	11.8%	100.0%	41.9%	100.0%	53.7%
14030	Chaffee	20.7%	53.9%	53.3%	79.3%	59.3%
14170	West Falls	32.3%	74.0%	48.6%	100.0%	60.6%
14111	North Collins	32.3%	57.0%	60.9%	100.0%	66.0%
14004	Alden	29.7%	54.1%	63.5%	85.3%	66.8%
14025	Boston	38.0%	87.4%	63.2%	68.9%	68.6%
14055	East Concord	34.2%	67.9%	59.5%	100.0%	68.9%
14080	Holland	31.4%	59.4%	61.8%	95.9%	69.0%
14210	Buffalo	39.3%	58.0%	75.2%	83.8%	70.6%
14206	Buffalo	43.1%	64.3%	75.2%	78.3%	72.8%
14208	Buffalo	37.4%	62.2%	86.5%	70.7%	74.0%
14001	Akron	39.5%	61.6%	67.8%	100.0%	74.1%
14222	Buffalo (Elmwood Village)	41.2%	61.3%	90.9%	80.3%	74.8%
14219	Blasdell	39.4%	61.1%	74.0%	96.9%	75.3%
14047	Derby	38.8%	67.7%	69.7%	100.0%	76.3%
14091	Lawtons	45.0%	45.7%	86.3%	89.6%	76.3%
14102	Marilla	34.6%	53.4%	80.7%	94.2%	76.6%
14006	Angola	35.9%	68.0%	75.5%	86.2%	77.1%
14059	Elma	38.9%	70.2%	74.5%	88.5%	77.9%
14141	Springville	33.3%	72.1%	70.7%	97.9%	78.0%
14215	Buffalo	38.8%	67.0%	79.4%	100.0%	78.3%
14069	Glenwood	36.6%	88.8%	70.8%	90.3%	78.8%
14204	Buffalo	39.4%	76.0%	76.7%	88.8%	78.9%
14218	Lackawanna	32.1%	62.5%	80.4%	97.9%	79.0%
14139	South Wales	36.8%	94.4%	68.3%	100.0%	80.0%
14211	Buffalo	47.6%	76.5%	80.5%	87.5%	80.5%
14057	Eden	46.6%	88.1%	71.2%	100.0%	80.8%
14207	Buffalo	44.6%	63.1%	94.5%	90.0%	81.2%
14216	Buffalo	51.9%	69.8%	84.4%	100.0%	81.6%
14043	Depew	44.7%	70.2%	81.8%	93.6%	81.7%
14220	Buffalo	45.0%	74.0%	83.8%	97.6%	83.4%
14225	Cheektowaga	48.0%	67.0%	91.6%	92.0%	83.7%
14209	Buffalo	38.4%	74.7%	85.1%	100.0%	83.7%
14052	East Aurora	65.8%	84.1%	77.0%	100.0%	84.2%
14214	Buffalo	47.8%	79.1%	86.7%	93.4%	84.6%

All data are provisional and represent data available at the time of the report.

<https://covid19vaccine.health.ny.gov/vaccine-demographic-data>

14150	Tonawanda	48.3%	77.8%	83.2%	94.1%	84.7%
14031	Clarence	54.4%	75.5%	79.8%	100.0%	84.9%
14224	West Seneca	51.3%	79.2%	80.2%	100.0%	85.3%
14217	Kenmore	57.8%	88.5%	80.4%	93.4%	85.6%
14212	Buffalo	47.8%	83.7%	87.1%	84.6%	85.7%
14227	Cheektowaga	58.1%	74.6%	82.9%	100.0%	86.0%
14169	Wales Center	58.6%	n/a	78.9%	100.0%	86.0%
14032	Clarence Center	55.8%	100.0%	79.5%	100.0%	86.5%
14201	Buffalo	36.4%	86.2%	83.6%	98.4%	86.8%
14213	Buffalo	38.4%	82.0%	90.1%	92.6%	87.0%
14075	Hamburg	55.3%	89.3%	81.1%	100.0%	87.8%
14228	Amherst (Getzville)	58.7%	80.4%	91.8%	95.6%	88.1%
14202	Buffalo	45.2%	71.8%	100.0%	100.0%	88.3%
14072	Grand Island	54.9%	92.5%	83.2%	100.0%	89.0%
14051	East Amherst	67.8%	100.0%	82.4%	100.0%	89.1%
14226	Amherst (Snyder/Eggertsville)	57.7%	87.7%	87.7%	100.0%	90.4%
14223	Tonawanda	50.6%	87.0%	88.4%	100.0%	90.8%
14127	Orchard Park	61.3%	100.0%	84.4%	100.0%	91.4%
14086	Lancaster	57.4%	93.9%	87.9%	100.0%	91.8%
14026	Bowmansville	100.0%	100.0%	89.3%	100.0%	93.4%
14221	Amherst/Williamsville/Clarence	67.4%	100.0%	89.0%	97.8%	93.8%
14033	Colden	58.8%	100.0%	94.5%	97.0%	95.8%
14085	Lake View	60.1%	91.0%	99.6%	95.5%	96.8%
14068	Getzville	76.4%	100.0%	100.0%	93.9%	97.5%
14134	Sardinia	48.6%	100.0%	100.0%	100.0%	100.0%
Total		48.48%	75.9%	82.0%	95.5%	83.5%

All data are provisional and represent data available at the time of the report.

<https://covid19vaccine.health.ny.gov/vaccine-demographic-data>

Section 3: COVID-19 Mortality Data

Table 4

Erie County COVID-19 Deaths by Age Group (January - December 2021)

Age Group	Jan	Feb	Mar	Apr	May	Jun	Jul	Aug	Sep	Oct	Nov	Dec	Total
<40	3	4	0	4	2	0	1	1	0	3	4	3	25
40 to 49	4	3	1	8	2	0	1	1	1	0	3	7	31
50 to 59	8	11	5	7	5	4	1	6	4	11	12	17	91
60 to 69	31	22	6	24	11	5	1	6	11	15	14	50	196
70 to 79	60	34	16	30	21	4	7	10	15	14	24	46	281
80+	163	62	29	27	24	5	1	17	24	38	40	66	496
Total # of Deaths	269	136	57	100	65	18	12	41	55	81	97	189	1,120
Ave. Death Age	81	76	77	71	74	70	70	74	77	76	73	73	76

Table 5

Erie County COVID-19 Deaths by Age Group (January 1-October 20, 2022)

Age Group	Jan	Feb	Mar	Apr	May	Jun	Jul	Aug	Sept	Oct	Total
<40	7	2	0	0	1	1	0	2	0	0	13
40 to 49	9	1	1	1	1	0	1	0	0	0	14
50 to 59	19	9	2	0	1	1	0	1	5	0	38
60 to 69	49	20	3	4	7	7	2	2	4	2	100
70 to 79	57	25	3	7	17	5	7	8	3	5	137
80+	90	40	10	17	37	12	10	11	13	15	255
Total # of Deaths	231	97	19	29	64	26	20	24	25	22	557
Ave. Death Age	74	76	78	80	81	77	79	76	77	84	77

2020 total deaths	1,276
2021 total deaths	1,120
2022 deaths to date	557
Total:	2,953

Table 6

Erie County COVID-19 Deaths by Residence

Residence	Fatalities	% of Fatalities	% of Population*
Buffalo	773	26.2%	29.2%
Erie County Excl. Buffalo	2,180	73.8%	70.8%
All of Erie County	2,953	100.0%	100.0%

*Population Source: Prepared from 2020 Census Bureau

Most recent data provided.